

# *Examination Results Statistics* *2008*

---

*for internal use only*



**UNIVERSITY OF  
CAMBRIDGE**

Student Statistics  
PRAO

## **University Examinations 2008: Contents**

	<i>Table</i>	<i>Page</i>
Notes on statistical tables		3
Honours Examination Results 1960-2008	01a	5
Graph of Honours Examination Results 1960-2008	01b	7
 <b>Section A: University Tables (white paper)</b>		
<b>University Tables - Tripos Examinations:</b>		
All Candidates	02a	9
Men/Women Split	02b	13
 <b>University Tables - Preliminary and Other Examinations:</b>		
All Candidates	03a	17
Men/Women Split	03b	19
 <b>University Tables - All Examinations:</b>		
All Candidates	04a	21
Men/Women Split	04b	23
 <b>University Tables - All Candidates:</b>		
All Undergraduate Examinations by Ethnic Background	05a	25
All Undergraduate Examinations by Ethnic Background, 2007 Entrants	05b	27
All Undergraduate Examinations by Ethnic Background, 2006 Entrants	05c	29
All Undergraduate Examinations by Ethnic Background, 2005 Entrants	05d	31
All Undergraduate Examinations by Ethnic Background, 2004 Entrants	5e	33
All Undergraduate Examinations by Disability	10a	35
All Undergraduate Examinations by Disability, 2007 Entrants	10b	37
All Undergraduate Examinations by Disability, 2006 Entrants	10c	39
All Undergraduate Examinations by Disability, 2005 Entrants	10d	41
All Undergraduate Examinations by Disability, 2004 Entrants	10e	43
 <b>University Tables - Final Medical and Veterinary Examinations</b>	 11	 45
<b>University Tables - Students deemed to have obtained honours whilst studying abroad</b>	12	47
 <b>Section B: College Tables (green paper)</b>		
<b>College Tables - Tripos Examinations:</b>		
All Candidates	6a	49
Men/Women Split	6b	51
 <b>College Tables - Preliminary Examinations:</b>		
All Candidates	7a	53
Men/Women Split	7b	55
 <b>College Tables - All Examinations:</b>		
All Candidates	8a	57
Men/Women Split	8b	59
 <b>College Tables - Unclassified Preliminary Examinations</b>	 9a	 61



# University Examinations 2008

## Notes on Statistical Tables

1. Subject to the exceptions listed below, the statistics include all candidates for Tripos and Preliminary examinations whether undergraduates, affiliated students or graduates.
2. The statistics exclude:
  - a) Candidates who took examinations as candidates 'not for honours' (with the exception of Part III of the Mathematical Tripos).
  - b) Candidates for: (i) Diploma and Certificate examinations; (ii) Oral examinations in Modern Languages; and (iii) Mus. B. examination.
  - c) Unclassified preliminary examinations (in History, Oriental Studies, Classics and Education Studies) and the First Examination for the Degree of Bachelor of Theology for Ministry. These results are shown separately in Table 9a so that they shall not affect percentages in the main tables.
  - d) The results for students who have spent the year studying abroad at the Massachusetts Institute of Technology or studying in Paris as part of the Double Maîtrise. These results are shown separately in Table 12 so that they shall not affect the percentages in the main tables.
  - e) Candidates about whom an application has been submitted to the Applications Committee but who were still awaiting a decision at the time these tables were produced.
3. The heading 'Other Results' includes (but does not differentiate between):
  - a) Candidates who failed their examinations
  - b) Honours candidates who have received an allowance from the Examiners.
  - c) Candidates who have received allowances (Deemed to have Deserved Honours (DDH) or granted an allowance towards the Ordinary degree) by the Applications Committee of the Council. (Allowances may be granted to candidates who have been ill or who have extenuating circumstances and have thus been prevented from taking an examination or whose performance has been adversely affected as a consequence.)
  - d) Candidates who have been granted a deferral.
4. In Part III of the Mathematical Tripos, a pass with distinction or merit has been counted for statistical purposes as Class I, and a pass as Class II division (1). This applies whether or not the candidate is a candidate for honours.
5. In Part II of the Manufacturing Engineering Tripos and Part IIB of the Engineering Tripos, a pass with distinction has been counted for statistical purposes as Class I, a pass with merit as Class II division (1), a pass as Class II division (2).
6. The class obtained in each language by candidates for Part 1A of the Modern and Medieval Languages Tripos has been counted as half a class. This explains why, in some years, the number of candidates under each class division for this Tripos and in the totals are not whole units.
7. Third-year pre-clinical medical and veterinary students are included under the Tripos examination for which they were entered.

*(continued...)*

8. Tables providing disability information (10a - 10e) have been revised since 2006. The category 'No known disability' has been replaced by 'No disability', leading to a significant shift from this category to 'Not known'.

**Please note that these statistics are provided for internal purposes only. Information relating to specific Colleges will not be released without their consent, unless there is a legal requirement to do so. Tables giving figures for the whole University will be published in the 'Student Numbers' special edition of the *Cambridge University Reporter*, and may then be released outside the University with suitable acknowledgment.**

**Planning and Resource Allocation Office  
University Offices  
Email: [student.statistics@admin.cam.ac.uk](mailto:student.statistics@admin.cam.ac.uk)**

**August 2008**

## Honours Examination Results 1960-2008

	Class I		Class II Division (1)		Class II Undivided		Class II Division (2)		Class III		Other Results		Total Candidates No.
	No.	%	No.	%	No.	%	No.	%	No.	%	No.	%	
1960	444.5	10.3	1,036.5	24.1	173.0	4.0	1,524.5	35.5	949.5	22.1	172.0	4.0	4,300
1961	453.5	10.5	1,060.0	24.5	185.0	4.3	1,552.5	35.9	907.0	20.9	172.0	4.0	4,330
1962	424.5	9.8	1,029.5	23.7	181.0	4.2	1,563.0	36.0	903.0	20.8	238.0	5.5	4,339
1963	459.0	10.6	1,076.5	24.8	154.0	3.6	1,544.5	35.7	896.0	20.7	202.0	4.7	4,332
1964	496.5	11.2	1,099.0	24.9	159.0	3.6	1,585.0	35.9	904.5	20.5	177.0	4.0	4,421
1965	529.0	11.6	1,238.5	27.2	180.0	3.9	1,597.5	35.0	821.0	18.0	194.0	4.3	4,560
1966	646.5	11.3	1,275.0	22.2	717.0	12.5	1,755.5	30.6	1,151.0	20.0	198.0	3.4	5,743
1967	730.5	12.2	1,399.0	23.3	616.0	10.3	1,941.0	32.3	1,038.0	17.3	283.5	4.7	6,008
1968	730.5	12.2	1,369.0	22.9	628.0	10.5	1,954.5	32.7	1,086.0	18.2	214.0	3.6	5,982
1969	746.5	12.3	1,532.0	25.3	646.0	10.7	1,951.5	32.2	962.0	15.9	215.0	3.6	6,053
1970	775.5	12.6	1,666.5	27.0	578.0	9.4	1,913.5	31.0	1,000.5	16.2	242.0	3.9	6,176
1971	806.0	12.6	1,668.5	26.2	703.0	11.0	2,041.0	32.0	918.5	14.4	240.0	3.8	6,377
1972	821.5	13.2	1,701.5	27.3	633.0	10.1	1,996.0	32.0	953.0	15.3	134.0	2.1	6,239
1973	824.0	12.8	1,739.0	26.9	682.0	10.6	2,144.5	33.2	919.5	14.2	145.0	2.2	6,454
1974	818.0	12.4	1,696.5	25.7	1,010.0	15.3	1,993.5	30.2	917.5	13.9	158.5	2.4	6,594
1975	831.0	12.5	2,039.0	30.6	643.0	9.6	2,176.0	32.6	802.0	12.0	174.0	2.6	6,665
1976	866.0	13.1	1,935.0	29.3	656.0	9.9	2,185.0	33.1	808.5	12.2	151.5	2.3	6,602
1977	917.0	13.1	2,134.0	30.5	697.0	10.0	2,317.0	33.1	804.0	11.5	123.0	1.8	6,992
1978	918.0	13.1	2,201.0	31.5	667.0	9.5	2,288.5	32.8	778.0	11.1	134.5	1.9	6,987
1979	943.0	12.9	2,295.0	31.5	676.0	9.3	2,385.5	32.7	855.0	11.7	135.5	1.9	7,290
1980	1,002.5	13.1	2,461.5	32.1	676.0	8.8	2,532.0	33.1	878.5	11.5	110.5	1.4	7,661
1981	1,002.5	12.9	2,513.5	32.4	705.0	9.1	2,544.5	32.8	891.0	11.5	101.5	1.3	7,758
1982	998.5	12.5	2,664.0	33.3	715.0	8.9	2,597.0	32.5	891.5	11.2	128.0	1.6	7,994
1983	1,029.5	12.9	2,809.0	35.1	737.0	9.2	2,477.5	30.9	839.5	10.5	117.5	1.5	8,010
1984	1,022.0	12.8	2,834.5	35.6	704.0	8.8	2,469.5	31.0	813.5	10.2	127.5	1.6	7,971
1985	1,090.0	13.8	2,801.0	35.5	752.0	9.5	2,399.0	30.4	733.5	9.3	108.5	1.4	7,884
1986	1,136.0	14.2	2,894.0	36.1	781.0	9.7	2,419.0	30.1	672.5	8.4	124.5	1.6	8,027
1987	1,206.5	14.9	3,107.5	38.4	749.0	9.3	2,303.5	28.5	617.0	7.6	109.5	1.4	8,093
1988	1,199.0	14.7	3,067.0	37.7	699.0	8.6	2,425.5	29.8	627.0	7.7	117.5	1.4	8,135
1989	1,304.5	15.7	3,345.0	40.3	704.0	8.5	2,337.5	28.1	532.0	6.4	86.0	1.0	8,309
1990	1,366.0	16.2	3,450.5	41.0	715.0	8.5	2,227.0	26.5	545.5	6.5	104.0	1.2	8,408
1991	1,400.5	16.5	3,481.0	41.1	743.0	8.8	2,237.5	26.4	502.0	5.9	104.0	1.2	8,468
1992	1,460.0	16.9	3,616.5	41.9	729.0	8.5	2,206.5	25.6	486.0	5.6	129.0	1.5	8,627

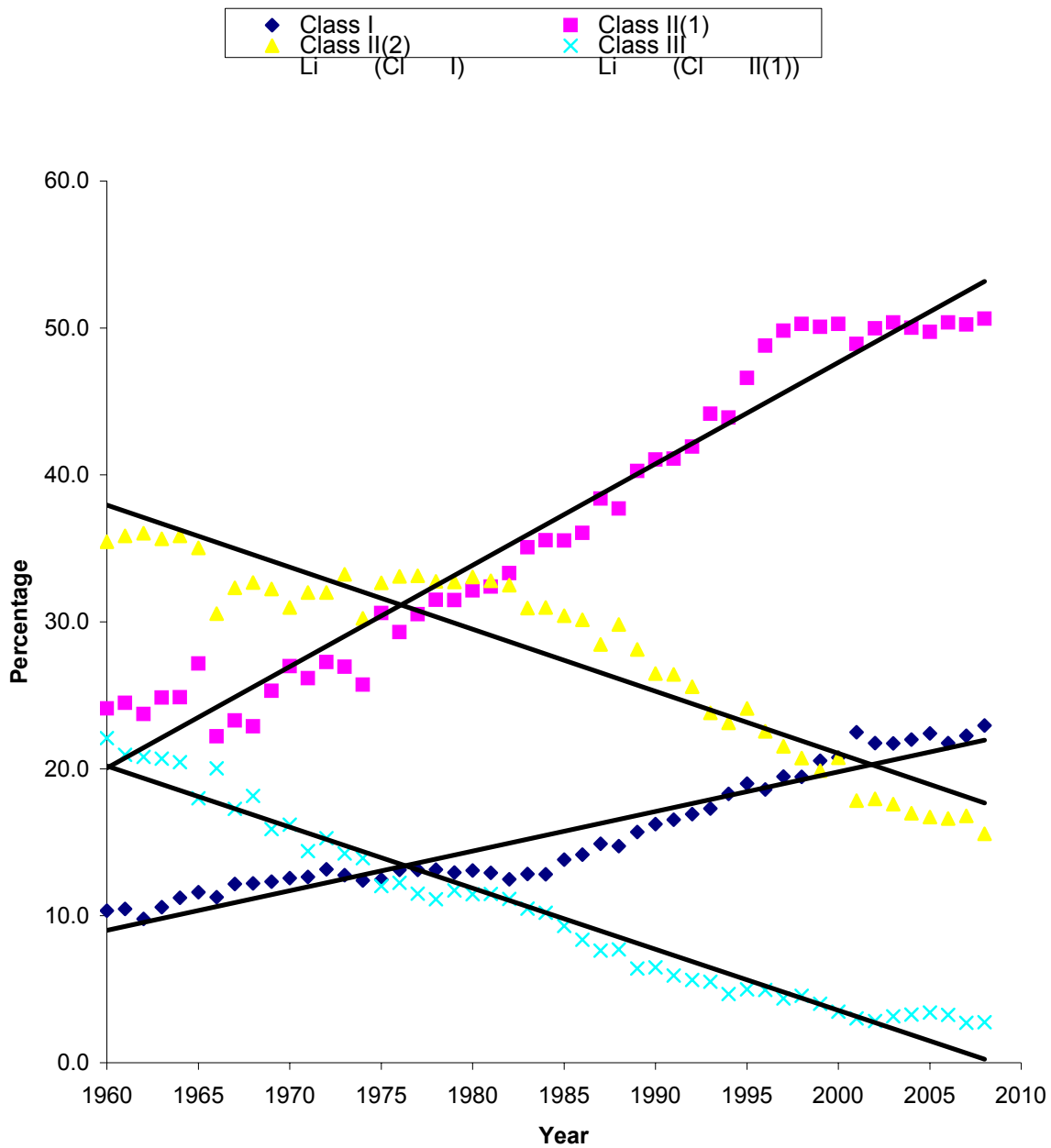
	Class I		Class II Division (1)		Class II Undivided		Class II Division (2)		Class III		Other Results		Total Candidates
	No.	%	No.	%	No.	%	No.	%	No.	%	No.	%	No.
1993	1,497.5	17.3	3,822.5	44.2	705.0	8.1	2,061.0	23.8	478.0	5.5	92.0	1.1	8,656
1994	1,594.5	18.3	3,825.5	43.9	774.0	8.9	2,015.0	23.1	407.0	4.7	98.0	1.1	8,714
1995	1,667.0	19.0	4,103.5	46.6	359.0	4.1	2,138.0	24.1	440.0	5.0	90.5	1.0	8,808
1996	1,684.0	18.6	4,420.0	48.8	356.0	3.9	2,043.5	22.6	448.0	4.9	108.5	1.2	9,060
1997	1,771.0	19.5	4,529.5	49.8	328.0	3.6	1,958.0	21.5	398.5	4.4	107.0	1.2	9,092
1998	1,798.5	19.4	4,650.5	50.3	366.0	4.0	1,917.0	20.7	420.5	4.5	96.5	1.0	9,249
1999	1,901.0	20.5	4,632.0	50.1	410.0	4.4	1,838.5	19.9	371.5	4.0	98.0	1.1	9,251
2000	1,946.0	20.8	4,711.5	50.3	378.0	4.0	1,944.0	20.7	325.5	3.5	65.0	0.7	9,370
2001	2,106.5	22.5	4,582.0	48.9	629.0	6.7	1,671.5	17.8	283.0	3.0	97.0	1.0	9,369
2002	2,108.0	21.8	4,841.0	50.0	650.0	6.7	1,740.0	18.0	274.0	2.8	76.0	0.8	9,689
2003	2,176.0	21.7	5,046.0	50.4	639.0	6.4	1,762.5	17.6	316.5	3.2	76.0	0.8	10,016
2004	2,215.5	22.0	5,039.0	50.0	685.0	6.8	1,711.0	17.0	329.5	3.3	94.0	0.9	10,074
2005	2,261.0	22.4	5,019.5	49.7	655.0	6.5	1,688.0	16.7	344.5	3.4	124.0	1.2	10,092
2006	2,179.0	21.8	5,046.0	50.4	682.0	6.8	1,664.0	16.6	326.0	3.3	121.0	1.2	10,018
2007	2,213.0	22.2	4,998.0	50.2	698.0	7.0	1,671.0	16.8	270.0	2.7	100.0	1.0	9,950
2008	2,298.5	22.9	5,072.5	50.6	720.0	7.2	1,560.5	15.6	276.5	2.8	91.0	0.9	10,019

6

Notes: Candidates who were taking examinations as candidates 'not for honours' and candidates receiving allowances from the Applications Committee of the Council of the Senate were excluded from the 1972 statistics (and thereafter) although they had been included in previous years. Candidates receiving allowances from the Applications Committee have been reintroduced to the table from 2008. Candidates for the LL.B Examination were included in 1972 for the first time but the LLM Examination was excluded from 1999. Candidates for the B.Ed. Degree were excluded from the statistics for the years 1972-79 inclusive, but, with the introduction of the Education Tripos, are included from 1980.

### Honours Examination Results 1960-2008

The graph shows the best fit line for each classification



N.B. The above graph does not include Others and Class II (Undivided)





## Tripos Examination Results, 2008

	Class I		Class II Division (1)		Class II Undivided		Class II Division (2)		Class III		Other Results		Total Candidates		
	No.	%	No.	%	No.	%	No.	%	No.	%	No.	%	No.	%	
Anglo-Saxon, Norse and Celtic Tripos, Part I	4	16.0%	19	76.0%	0	0.0%	2	8.0%	0	0.0%	0	0.0%	0	0.0%	25
Anglo-Saxon, Norse and Celtic Tripos, Part II	5	21.7%	14	60.9%	0	0.0%	3	13.0%	0	0.0%	1	4.3%	0	0.0%	23
Archaeological and Anthropological Tripos, Part I	17	28.8%	37	62.7%	0	0.0%	5	8.5%	0	0.0%	0	0.0%	0	0.0%	59
Archaeological and Anthropological Tripos, Part IIA:															
Archaeology	4	19.0%	17	81.0%	0	0.0%	0	0.0%	0	0.0%	0	0.0%	0	0.0%	21
Archaeological and Anthropological Tripos, Part IIA:															
Biological Anthropology	1	8.3%	8	66.7%	0	0.0%	2	16.7%	1	8.3%	0	0.0%	0	0.0%	12
Archaeological and Anthropological Tripos, Part IIA:															
Social Anthropology	8	25.0%	23	71.9%	0	0.0%	1	3.1%	0	0.0%	0	0.0%	0	0.0%	32
Archaeological and Anthropological Tripos, Part IIB:															
Archaeology	8	42.1%	10	52.6%	0	0.0%	1	5.3%	0	0.0%	0	0.0%	0	0.0%	19
Archaeological and Anthropological Tripos, Part IIB:															
Biological Anthropology	11	29.7%	21	56.8%	0	0.0%	4	10.8%	0	0.0%	1	2.7%	0	0.0%	37
Archaeological and Anthropological Tripos, Part IIB:															
Social Anthropology	6	16.7%	27	75.0%	0	0.0%	3	8.3%	0	0.0%	0	0.0%	0	0.0%	36
Architecture Tripos, Part IA	7	14.3%	27	55.1%	0	0.0%	10	20.4%	5	10.2%	0	0.0%	0	0.0%	49
Architecture Tripos, Part IB	3	7.7%	24	61.5%	0	0.0%	9	23.1%	3	7.7%	0	0.0%	0	0.0%	39
Architecture Tripos, Part II	7	18.9%	19	51.4%	0	0.0%	10	27.0%	0	0.0%	1	2.7%	0	0.0%	37
Chemical Engineering Tripos, Part I	14	24.6%	21	36.8%	0	0.0%	14	24.6%	6	10.5%	2	3.5%	0	0.0%	57
Chemical Engineering Tripos, Part IIA	14	28.0%	20	40.0%	0	0.0%	13	26.0%	3	6.0%	0	0.0%	0	0.0%	50
Chemical Engineering Tripos, Part IIB	9	22.0%	28	68.3%	0	0.0%	4	9.8%	0	0.0%	0	0.0%	0	0.0%	41
Classical Tripos, Part IA	11	12.8%	0	0.0%	75	87.2%	0	0.0%	0	0.0%	0	0.0%	0	0.0%	86
Classical Tripos, Part IB	10	12.3%	46	56.8%	0	0.0%	25	30.9%	0	0.0%	0	0.0%	0	0.0%	81
Classical Tripos, Part II	19	25.7%	51	68.9%	0	0.0%	2	2.7%	2	2.7%	0	0.0%	0	0.0%	74
Computer Science Tripos, Part IA	17	23.3%	18	24.7%	0	0.0%	31	42.5%	7	9.6%	0	0.0%	0	0.0%	73
Computer Science Tripos, Part IB	16	23.9%	24	35.8%	0	0.0%	21	31.3%	4	6.0%	2	3.0%	0	0.0%	67
Computer Science Tripos, Part II	18	28.1%	21	32.8%	0	0.0%	21	32.8%	4	6.3%	0	0.0%	0	0.0%	64
Computer Science Tripos, Part II (General)	1	20.0%	2	40.0%	0	0.0%	1	20.0%	1	20.0%	0	0.0%	0	0.0%	5
Economics Tripos, Part I	41	24.0%	82	48.0%	0	0.0%	37	21.6%	11	6.4%	0	0.0%	0	0.0%	171
Economics Tripos, Part IIA	32	22.2%	56	38.9%	0	0.0%	45	31.3%	10	6.9%	1	0.7%	1	0.7%	144
Economics Tripos, Part IIB	44	27.7%	84	52.8%	0	0.0%	25	15.7%	4	2.5%	2	1.3%	2	1.3%	159
Education Studies Tripos, Part I	15	18.5%	58	71.6%	0	0.0%	7	8.6%	0	0.0%	1	1.2%	0	0.0%	81
Education Studies Tripos, Part II	19	22.9%	52	62.7%	0	0.0%	10	12.0%	2	2.4%	0	0.0%	0	0.0%	83
Engineering Tripos, Part IA	78	26.3%	113	38.0%	0	0.0%	80	26.9%	20	6.7%	6	2.0%	0	0.0%	297
Engineering Tripos, Part IB	75	29.3%	101	39.5%	0	0.0%	61	23.8%	17	6.6%	2	0.8%	2	0.8%	256
Engineering Tripos, Part IIA	59	28.0%	88	41.7%	0	0.0%	49	23.2%	13	6.2%	2	0.9%	2	0.9%	211
Engineering Tripos, Part IIB	40	19.5%	110	53.7%	0	0.0%	52	25.4%	0	0.0%	3	1.5%	0	0.0%	205
English Tripos, Part I	41	19.6%	146	69.9%	0	0.0%	19	9.1%	3	1.4%	0	0.0%	0	0.0%	209
English Tripos, Part II	42	20.1%	150	71.8%	0	0.0%	15	7.2%	2	1.0%	0	0.0%	0	0.0%	209

	Class I		Class II Division (1)		Class II Undivided		Class II Division (2)		Class III		Other Results		Total Candidates	
	No.	%	No.	%	No.	%	No.	%	No.	%	No.	%	No.	%
Geographical Tripos, Part IA	10	11.0%	50	54.9%	0	0.0%	30	33.0%	1	1.1%	0	0.0%	91	
Geographical Tripos, Part IB	14	14.0%	72	72.0%	0	0.0%	14	14.0%	0	0.0%	0	0.0%	100	
Geographical Tripos, Part II	25	22.9%	73	67.0%	0	0.0%	11	10.1%	0	0.0%	0	0.0%	109	
Historical Tripos, Part I	24	11.9%	162	80.6%	0	0.0%	14	7.0%	1	0.5%	0	0.0%	201	
Historical Tripos, Part II	44	21.2%	155	74.5%	0	0.0%	6	2.9%	2	1.0%	1	0.5%	208	
History of Art Tripos, Part I	3	10.3%	24	82.8%	0	0.0%	2	6.9%	0	0.0%	0	0.0%	29	
History of Art Tripos, Part IIA	1	2.9%	30	88.2%	0	0.0%	3	8.8%	0	0.0%	0	0.0%	34	
History of Art Tripos, Part IIB	5	18.5%	21	77.8%	0	0.0%	1	3.7%	0	0.0%	0	0.0%	27	
Land Economy Tripos, Part IA	3	5.4%	41	73.2%	0	0.0%	10	17.9%	2	3.6%	0	0.0%	56	
Land Economy Tripos, Part IB	3	6.7%	36	80.0%	0	0.0%	4	8.9%	2	4.4%	0	0.0%	45	
Land Economy Tripos, Part II	9	17.6%	40	78.4%	0	0.0%	2	3.9%	0	0.0%	0	0.0%	51	
Law Tripos, Part IA	15	7.1%	138	65.7%	0	0.0%	51	24.3%	3	1.4%	3	1.4%	210	
Law Tripos, Part IB	19	8.8%	140	65.1%	0	0.0%	44	20.5%	4	1.9%	8	3.7%	215	
Law Tripos, Part II	33	16.0%	143	69.4%	0	0.0%	26	12.6%	1	0.5%	3	1.5%	206	
Linguistics Tripos	2	33.3%	4	66.7%	0	0.0%	0	0.0%	0	0.0%	0	0.0%	6	
Management Studies Tripos	13	20.0%	47	72.3%	0	0.0%	5	7.7%	0	0.0%	0	0.0%	65	
Manufacturing Engineering Tripos, Part II	9	23.1%	20	51.3%	0	0.0%	10	25.6%	0	0.0%	0	0.0%	39	
Manufacturing Engineering Tripos, Part I	10	26.3%	18	47.4%	0	0.0%	10	26.3%	0	0.0%	0	0.0%	38	
Mathematical Tripos, Part IA	69	29.5%	94	40.2%	0	0.0%	50	21.4%	13	5.6%	8	3.4%	234	
Mathematical Tripos, Part IB	72	31.3%	92	40.0%	0	0.0%	51	22.2%	12	5.2%	3	1.3%	230	
Mathematical Tripos, Part II	62	30.5%	85	41.9%	0	0.0%	39	19.2%	10	4.9%	7	3.4%	203	
Mathematical Tripos Part III	124	57.7%	87	40.5%	0	0.0%	0	0.0%	0	0.0%	4	1.9%	215	
Medical and Veterinary Sciences Tripos, Part IA	75	22.8%	0	0.0%	238	72.3%	0	0.0%	14	4.3%	2	0.6%	329	
Medical and Veterinary Sciences Tripos, Part IB	57	16.8%	184	54.1%	0	0.0%	89	26.2%	7	2.1%	3	0.9%	340	
Modern and Medieval Languages Tripos, Part IA	41.5	23.2%	116.5	65.1%	0	0.0%	19.5	10.9%	0.5	0.3%	1	0.6%	179	
Modern and Medieval Languages Tripos, Part IB	38	21.0%	128	70.7%	0	0.0%	15	8.3%	0	0.0%	0	0.0%	181	
Modern and Medieval Languages Tripos, Part II	60	36.4%	91	55.2%	0	0.0%	11	6.7%	0	0.0%	3	1.8%	165	
Music Tripos, Part IA	8	10.5%	39	51.3%	0	0.0%	28	36.8%	1	1.3%	0	0.0%	76	
Music Tripos, Part IB	8	12.5%	46	71.9%	0	0.0%	10	15.6%	0	0.0%	0	0.0%	64	
Music Tripos, Part II	10	15.4%	47	72.3%	0	0.0%	7	10.8%	0	0.0%	1	1.5%	65	
Natural Sciences Tripos, Part IA	150	25.0%	0	0.0%	407	67.8%	0	0.0%	38	6.3%	5	0.8%	600	
Natural Sciences Tripos, Part IB	131	24.1%	190	35.0%	0	0.0%	189	34.8%	25	4.6%	8	1.5%	543	
Natural Sciences Tripos, Part II: Astrophysics	6	35.3%	8	47.1%	0	0.0%	3	17.6%	0	0.0%	0	0.0%	17	
Natural Sciences Tripos, Part II: Biochemistry	9	25.7%	24	68.6%	0	0.0%	2	5.7%	0	0.0%	0	0.0%	35	
Natural Sciences Tripos, Part II: Biological and Biomedical Sciences	16	10.8%	94	63.5%	0	0.0%	35	23.6%	2	1.4%	1	0.7%	148	
Natural Sciences Tripos, Part II: Chemistry	37	36.3%	40	39.2%	0	0.0%	20	19.6%	3	2.9%	2	2.0%	102	
Natural Sciences Tripos, Part II: Experimental and Theoretical Physics	45	43.3%	37	35.6%	0	0.0%	16	15.4%	6	5.8%	0	0.0%	104	
Natural Sciences Tripos, Part II: Genetics	7	28.0%	18	72.0%	0	0.0%	0	0.0%	0	0.0%	0	0.0%	25	
Natural Sciences Tripos, Part II: Geological Sciences	5	13.5%	28	75.7%	0	0.0%	4	10.8%	0	0.0%	0	0.0%	37	

	Class I		Class II Division (1)		Class II Undivided		Class II Division (2)		Class III		Other Results		Total Candidates		
	No.	%	No.	%	No.	%	No.	%	No.	%	No.	%	No.	%	
Natural Sciences Tripos, Part II: History and Philosophy of Science	8	33.3%	15	62.5%	0	0.0%	1	4.2%	0	0.0%	0	0.0%	0	0.0%	24
Natural Sciences Tripos, Part II: Materials Sciences and Metallurgy	4	19.0%	13	61.9%	0	0.0%	2	9.5%	2	9.5%	0	0.0%	0	0.0%	21
Natural Sciences Tripos, Part II: Neuroscience	7	23.3%	18	60.0%	0	0.0%	5	16.7%	0	0.0%	0	0.0%	0	0.0%	30
Natural Sciences Tripos, Part II: Pathology	11	23.9%	32	69.6%	0	0.0%	3	6.5%	0	0.0%	0	0.0%	0	0.0%	46
Natural Sciences Tripos, Part II: Pharmacology	5	15.2%	24	72.7%	0	0.0%	3	9.1%	1	3.0%	0	0.0%	0	0.0%	33
Natural Sciences Tripos, Part II: Physical Sciences	0	0.0%	1	100.0%	0	0.0%	0	0.0%	0	0.0%	0	0.0%	0	0.0%	1
Natural Sciences Tripos, Part II: Physiology and Psychology	0	0.0%	5	83.3%	0	0.0%	1	16.7%	0	0.0%	0	0.0%	0	0.0%	6
Natural Sciences Tripos, Part II: Physiology, Development and Neuroscience	18	24.3%	52	70.3%	0	0.0%	3	4.1%	0	0.0%	1	1.4%	0	0.0%	74
Natural Sciences Tripos, Part II: Plant Sciences	4	23.5%	12	70.6%	0	0.0%	1	5.9%	0	0.0%	0	0.0%	0	0.0%	17
Natural Sciences Tripos, Part II: Psychology	11	21.6%	38	74.5%	0	0.0%	2	3.9%	0	0.0%	0	0.0%	0	0.0%	51
Natural Sciences Tripos, Part II: Zoology	14	18.7%	56	74.7%	0	0.0%	5	6.7%	0	0.0%	0	0.0%	0	0.0%	75
Natural Sciences Tripos, Part III: Astrophysics	5	71.4%	2	28.6%	0	0.0%	0	0.0%	0	0.0%	0	0.0%	0	0.0%	7
Natural Sciences Tripos, Part III: Biochemistry	10	45.5%	10	45.5%	0	0.0%	2	9.1%	0	0.0%	0	0.0%	0	0.0%	22
Natural Sciences Tripos, Part III: Chemistry	30	40.0%	35	46.7%	0	0.0%	8	10.7%	2	2.7%	0	0.0%	0	0.0%	75
Natural Sciences Tripos, Part III: Experimental and Theoretical Physics	39	44.8%	30	34.5%	0	0.0%	15	17.2%	3	3.4%	0	0.0%	0	0.0%	87
Natural Sciences Tripos, Part III: Geological Sciences	11	31.4%	21	60.0%	0	0.0%	2	5.7%	1	2.9%	0	0.0%	0	0.0%	35
Natural Sciences Tripos, Part III: Materials Science and Metallurgy	4	40.0%	4	40.0%	0	0.0%	2	20.0%	0	0.0%	0	0.0%	0	0.0%	10
Oriental Studies Tripos, Part I	10	17.5%	37	64.9%	0	0.0%	10	17.5%	0	0.0%	0	0.0%	0	0.0%	57
Oriental Studies Tripos, Part II	12	36.4%	20	60.6%	0	0.0%	1	3.0%	0	0.0%	0	0.0%	0	0.0%	33
Philosophy Tripos, Part IA	6	11.5%	36	69.2%	0	0.0%	10	19.2%	0	0.0%	0	0.0%	0	0.0%	52
Philosophy Tripos, Part IB	9	18.4%	35	71.4%	0	0.0%	4	8.2%	0	0.0%	1	2.0%	0	0.0%	49
Philosophy Tripos, Part II	11	20.4%	33	61.1%	0	0.0%	8	14.8%	2	3.7%	0	0.0%	0	0.0%	54
Social and Political Sciences Tripos, Part I	21	17.4%	89	73.6%	0	0.0%	11	9.1%	0	0.0%	0	0.0%	0	0.0%	121
Social and Political Sciences Tripos, Part IIA	14	12.7%	76	69.1%	0	0.0%	19	17.3%	0	0.0%	1	0.9%	0	0.0%	110
Social and Political Sciences Tripos, Part IIB	21	18.8%	78	69.6%	0	0.0%	13	11.6%	0	0.0%	0	0.0%	0	0.0%	112
Theological and Religious Studies Tripos, Part I	7	13.0%	39	72.2%	0	0.0%	8	14.8%	0	0.0%	0	0.0%	0	0.0%	54
Theological and Religious Studies Tripos, Part IIA	14	23.0%	42	68.9%	0	0.0%	5	8.2%	0	0.0%	0	0.0%	0	0.0%	61
Theological and Religious Studies Tripos, Part IIB	24	35.3%	40	58.8%	0	0.0%	3	4.4%	0	0.0%	1	1.5%	0	0.0%	68
<b>Totals</b>	<b>2,298.5</b>	<b>22.9%</b>	<b>5,072.5</b>	<b>50.6%</b>	<b>720</b>	<b>7.2%</b>	<b>1,560.5</b>	<b>15.6%</b>	<b>276.5</b>	<b>2.8%</b>	<b>91</b>	<b>0.9%</b>	<b>10,019</b>		



## Men's and Women's Tripos Examination Results, 2008

	Class I:						Class II (1):						Class II (2):						Class III:						Others:						Total:							
	Men			Women			Men			Women			Men			Women			Men			Women			Men			Women			Men			Women				
	No.	%		No.	%		No.	%		No.	%		No.	%		No.	%		No.	%		No.	%		No.	%		No.	%		No.	%		No.	%		No.	%
Anglo-Saxon, Norse and Celtic Tripos, Part I	1	9.1%	3	21.4%	9	81.8%	10	71.4%	0	0.0%	0	0.0%	1	9.1%	1	7.1%	0	0.0%	0	0.0%	0	0.0%	0	0.0%	0	0.0%	0	0.0%	0	0.0%	0	0.0%	0	0.0%	11	44.0%	14	56.0%
Anglo-Saxon, Norse and Celtic Tripos, Part II	3	27.3%	2	16.7%	5	45.5%	9	75.0%	0	0.0%	0	0.0%	2	18.2%	1	8.3%	0	0.0%	0	0.0%	0	0.0%	0	0.0%	0	0.0%	0	0.0%	0	0.0%	0	0.0%	11	47.8%	12	52.2%		
Archaeological and Anthropological Tripos, Part I	4	30.8%	13	28.3%	8	61.5%	29	63.0%	0	0.0%	0	0.0%	1	7.7%	4	8.7%	0	0.0%	0	0.0%	0	0.0%	0	0.0%	0	0.0%	0	0.0%	0	0.0%	0	0.0%	13	22.0%	46	78.0%		
Archaeological and Anthropological Tripos, Part IIA: Archaeology	3	42.9%	1	7.1%	4	57.1%	13	92.9%	0	0.0%	0	0.0%	0	0.0%	0	0.0%	0	0.0%	0	0.0%	0	0.0%	0	0.0%	0	0.0%	0	0.0%	0	0.0%	0	0.0%	7	33.3%	14	66.7%		
Archaeological and Anthropological Tripos, Part IIA: Biological Anthropology	0	0.0%	1	12.5%	3	75.0%	5	62.5%	0	0.0%	0	0.0%	0	0.0%	0	0.0%	2	25.0%	1	25.0%	0	0.0%	0	0.0%	0	0.0%	0	0.0%	0	0.0%	0	0.0%	4	33.3%	8	66.7%		
Archaeological and Anthropological Tripos, Part IIA: Social Anthropology	3	60.0%	5	18.5%	2	40.0%	21	77.8%	0	0.0%	0	0.0%	0	0.0%	0	0.0%	1	3.7%	0	0.0%	0	0.0%	0	0.0%	0	0.0%	0	0.0%	0	0.0%	0	0.0%	5	15.6%	27	84.4%		
Archaeological and Anthropological Tripos, Part IIB: Archaeology	2	33.3%	6	46.2%	3	50.0%	7	53.8%	0	0.0%	0	0.0%	0	0.0%	1	16.7%	0	0.0%	0	0.0%	0	0.0%	0	0.0%	0	0.0%	0	0.0%	0	0.0%	0	0.0%	6	31.6%	13	68.4%		
Archaeological and Anthropological Tripos, Part IIB: Biological Anthropology	5	29.4%	6	30.0%	9	52.9%	12	60.0%	0	0.0%	0	0.0%	2	11.8%	2	10.0%	0	0.0%	0	0.0%	0	0.0%	0	0.0%	0	0.0%	0	0.0%	0	0.0%	1	5.9%	17	45.9%	20	54.1%		
Archaeological and Anthropological Tripos, Part IIB: Social Anthropology	0	0.0%	6	22.2%	8	88.9%	19	70.4%	0	0.0%	0	0.0%	0	0.0%	1	11.1%	2	7.4%	0	0.0%	0	0.0%	0	0.0%	0	0.0%	0	0.0%	0	0.0%	0	0.0%	9	25.0%	27	75.0%		
Architecture Tripos, Part IA	2	8.7%	5	19.2%	11	47.8%	16	61.5%	0	0.0%	0	0.0%	6	26.1%	4	15.4%	0	0.0%	4	17.4%	0	0.0%	0	0.0%	0	0.0%	0	0.0%	0	0.0%	0	0.0%	23	46.9%	26	53.1%		
Architecture Tripos, Part IB	2	11.1%	4	8.8%	8	44.4%	16	76.2%	0	0.0%	0	0.0%	6	33.3%	3	14.3%	0	0.0%	2	11.1%	0	0.0%	0	0.0%	0	0.0%	0	0.0%	0	0.0%	0	0.0%	18	46.2%	21	53.8%		
Architecture Tripos, Part II	2	13.3%	5	22.7%	10	66.7%	9	40.9%	0	0.0%	0	0.0%	3	20.0%	7	31.8%	0	0.0%	0	0.0%	0	0.0%	0	0.0%	0	0.0%	0	0.0%	0	0.0%	1	4.5%	15	40.5%	22	59.5%		
Chemical Engineering Tripos, Part I	9	25.7%	5	22.7%	12	34.3%	9	40.9%	0	0.0%	0	0.0%	3	27.7%	5	22.7%	3	13.6%	3	8.6%	0	0.0%	2	5.7%	0	0.0%	0	0.0%	0	0.0%	35	61.4%	22	38.6%				
Chemical Engineering Tripos, Part IIA	12	33.3%	2	14.3%	12	33.3%	8	57.1%	0	0.0%	0	0.0%	10	27.8%	3	21.4%	2	5.6%	1	7.1%	0	0.0%	0	0.0%	0	0.0%	0	0.0%	0	0.0%	36	72.0%	14	28.0%				
Chemical Engineering Tripos, Part IIB	4	16.7%	5	29.4%	18	75.0%	10	58.8%	0	0.0%	0	0.0%	2	8.3%	2	11.8%	0	0.0%	0	0.0%	0	0.0%	0	0.0%	0	0.0%	0	0.0%	0	0.0%	24	58.5%	17	41.5%				
Classical Tripos, Part IA	4	15.4%	7	11.7%	0	0.0%	0	0.0%	22	84.6%	53	88.3%	0	0.0%	0	0.0%	0	0.0%	0	0.0%	0	0.0%	0	0.0%	0	0.0%	0	0.0%	0	0.0%	0	0.0%	26	30.2%	60	69.8%		
Classical Tripos, Part IB	3	10.7%	7	13.2%	14	50.0%	32	60.4%	0	0.0%	0	0.0%	11	39.3%	14	26.4%	0	0.0%	0	0.0%	0	0.0%	0	0.0%	0	0.0%	0	0.0%	0	0.0%	0	0.0%	28	34.6%	53	65.4%		
Classical Tripos, Part II	8	24.2%	11	26.8%	23	69.7%	28	68.3%	0	0.0%	0	0.0%	2	6.1%	0	0.0%	0	0.0%	0	0.0%	0	0.0%	0	0.0%	0	0.0%	0	0.0%	0	0.0%	0	0.0%	33	44.6%	41	55.4%		
Computer Science Tripos, Part IA	17	25.8%	0	0.0%	17	25.8%	1	14.3%	0	0.0%	0	0.0%	28	42.4%	3	42.9%	4	6.1%	3	42.9%	0	0.0%	0	0.0%	0	0.0%	0	0.0%	0	0.0%	66	90.4%	7	9.6%				
Computer Science Tripos, Part IB	16	25.8%	0	0.0%	22	35.5%	2	40.0%	0	0.0%	0	0.0%	19	30.6%	4	6.5%	0	0.0%	4	6.5%	0	0.0%	1	1.6%	1	1.6%	1	1.6%	20	20.0%	62	92.5%	5	7.5%				
Computer Science Tripos, Part II	17	28.8%	1	20.0%	21	35.6%	0	0.0%	0	0.0%	0	0.0%	18	30.5%	3	60.0%	3	5.1%	1	20.0%	0	0.0%	0	0.0%	0	0.0%	0	0.0%	0	0.0%	59	92.2%	5	7.8%				
Computer Science Tripos, Part III	1	25.0%	0	0.0%	2	50.0%	0	0.0%	0	0.0%	0	0.0%	0	0.0%	1	100.0%	1	25.0%	0	0.0%	0	0.0%	0	0.0%	0	0.0%	0	0.0%	4	80.0%	1	20.0%						
Economics Tripos, Part I	24	23.8%	17	24.3%	50	49.5%	32	45.7%	0	0.0%	0	0.0%	19	18.8%	18	25.7%	8	7.9%	3	4.3%	0	0.0%	0	0.0%	0	0.0%	0	0.0%	0	0.0%	101	59.1%	70	40.9%				
Economics Tripos, Part IA	21	21.6%	11	23.4%	41	42.3%	15	31.9%	0	0.0%	0	0.0%	29	29.9%	16	34.0%	5	5.2%	5	10.6%	1	1.0%	0	0.0%	0	0.0%	0	0.0%	97	67.4%	47	32.6%						
Economics Tripos, Part IB	29	29.9%	15	24.2%	49	50.5%	35	56.5%	0	0.0%	0	0.0%	16	16.5%	9	14.5%	2	2.1%	2	3.2%	1	1.0%	1	1.0%	1	1.6%	1	1.6%	97	61.0%	62	39.0%						
Education Studies Tripos, Part I	4	28.6%	11	16.4%	9	64.3%	49	73.1%	0	0.0%	0	0.0%	1	7.1%	6	9.0%	0	0.0%	0	0.0%	0	0.0%	0	0.0%	0	0.0%	0	0.0%	14	17.3%	67	82.7%						
Education Studies Tripos, Part II	2	15.4%	17	24.3%	8	61.5%	44	62.9%	0	0.0%	0	0.0%	3	23.1%	7	10.0%	0	0.0%	2	2.9%	0	0.0%	0	0.0%	0	0.0%	0	0.0%	13	15.7%	70	84.3%						
Engineering Tripos, Part IA	70	29.8%	8	12.9%	90	38.3%	23	37.1%	0	0.0%	0	0.0%	56	23.8%	24	38.7%	14	6.0%	6	9.7%	5	2.1%	1	1.6%	1	1.6%	235	79.1%	62	20.9%								
Engineering Tripos, Part IB	61	32.3%	14	20.9%	76	40.2%	25	37.3%	0	0.0%	0	0.0%	42	22.2%	19	28.4%	9	4.8%	8	11.9%	1	0.5%	1	1.5%	1	1.5%	189	73.8%	67	26.2%								
Engineering Tripos, Part IIA	50	30.7%	9	18.8%	68	41.7%	20	41.7%	0	0.0%	0	0.0%	32	19.6%	17	35.4%	12	7.4%	1	2.1%	1	0.6%	1	0.6%	1	0.6%	163	77.3%	48	22.7%								
Engineering Tripos, Part IIB	27	17.9%	13	24.1%	81	53.6%	29	53.7%	0	0.0%	0	0.0%	41	27.2%	11	20.4%	0	0.0%	0	0.0%	0	0.0%	2	1.3%	1	1.3%	151	73.7%	54	26.3%								
English Tripos, Part I	15	25.4%	26	17.3%	38	64.4%	108	72.0%	0	0.0%	0	0.0%	5	8.5%	14	9.3%	1	1.7%	2	1.5%	0	0.0%	0	0.0%	0	0.0%	59	28.2%	150	71.8%								
English Tripos, Part II	24	31.2%	18	13.6%	50	64.9%	100	75.8%	0	0.0%	0	0.0%	3	3.9%	12	9.1%	0	0.0%	2	1.5%	0	0.0%	0	0.0%	0	0.0%	77	36.8%	132	63.2%								
Geographical Tripos, Part IA	4	10.5%	6	11.3%	24	63.2%	26	49.1%	0	0.0%	0	0.0%	9	23.7%	21	39.6%	1	2.6%	0	0.0%	0	0.0%	0	0.0%	0	0.0%	0	0.0%	38	41.8%	53	58.2%						
Geographical Tripos, Part IB	6	13.3%	8	14.5%	34	75.6%	38	69.1%	0	0.0%	0	0.0%	5	11.1%	9	16.4%	0	0.0%	0	0.0%	0	0.0%	0	0.0%	0	0.0%	0	0.0%	45	45.0%	55	55.0%						
Geographical Tripos, Part II	18	40.0%	7	10.9%	21	46.7%	52	81.3%	0	0.0%	0	0.0%	6	13.3%	5	7.8%	0	0.0%	0	0.0%	0	0.0%	0	0.0%	0	0.0%	0	0.0%	40	41.3%	64	58.7%						
Historical Tripos, Part I	19	18.4%	5	5.1%	77	74.8%	85	86.7%	0	0.0%	0	0.0%	6	5.8%	8	8.2%	1	1.0%	0	0.0%	0	0.0%	0	0.0%	0	0.0%	0	0.0%	103	51.2%	98	48.8%						
Historical Tripos, Part II	26	25.2%	18	17.1%	71	68.9%	84	80.0%	0	0.0%	0	0.0%	5	4.9%	1	1.0%	1	1.0%	1	1.0%	0	0.0%	0	0.0%	0	0.0%	1	1.0%	103	49.5%	105	50.5%						
History of Art Tripos, Part I	0	0.0%	3	15.0%	8	88.9%	16	80.0%	0	0.0%	0	0.0%	1	11.1%	1	5.0%	0	0.0%	0	0.0%	0	0.0%	0	0.0%	0	0.0%	0	0.0%	9	31.0%	20	69.0%						
History of Art Tripos, Part																																						

	Class I:						Class II (1):						Class II:						Class II (2):						Class III:						Others:						Total:					
	Men			Women			Men			Women			Men			Women			Men			Women			Men			Women			Men			Women			Men			Women		
	No.	%	No.	%	No.	%	No.	%	No.	%	No.	%	No.	%	No.	%	No.	%	No.	%	No.	%	No.	%	No.	%	No.	%	No.	%	No.	%	No.	%	No.	%	No.	%				
Land Economy Tripos, Part IA	2	6.5%	1	4.0%	23	74.2%	18	72.0%	0	0.0%	0	0.0%	4	12.9%	6	24.0%	2	6.5%	0	0.0%	0	0.0%	0	0.0%	0	0.0%	0	0.0%	0	0.0%	0	0.0%	0	0.0%	0	0.0%	31	55.4%	25	44.6%		
Land Economy Tripos, Part IB	0	0.0%	3	13.6%	19	82.6%	17	77.3%	0	0.0%	0	0.0%	2	8.7%	2	9.1%	2	8.7%	0	0.0%	0	0.0%	0	0.0%	0	0.0%	0	0.0%	0	0.0%	0	0.0%	23	45.1%	22	48.9%						
Land Economy Tripos, Part II	6	26.1%	3	10.7%	15	65.2%	25	89.3%	0	0.0%	0	0.0%	0	0.0%	0	0.0%	0	0.0%	0	0.0%	0	0.0%	0	0.0%	0	0.0%	0	0.0%	0	0.0%	0	0.0%	23	45.1%	28	54.9%						
Law Tripos, Part IA	10	10.8%	5	4.3%	63	67.7%	75	64.1%	0	0.0%	0	0.0%	20	21.5%	31	26.5%	0	0.0%	3	2.6%	0	0.0%	3	2.6%	0	0.0%	3	2.6%	0	0.0%	93	44.3%	117	55.7%								
Law Tripos, Part IB	6	6.5%	13	10.6%	63	68.5%	77	62.6%	0	0.0%	0	0.0%	17	17.4%	28	22.8%	1	1.1%	3	2.4%	6	6.5%	2	1.6%	0	0.0%	1	1.1%	2	1.6%	92	42.8%	123	57.2%								
Law Tripos, Part II	17	18.5%	16	14.0%	61	66.3%	82	71.9%	0	0.0%	0	0.0%	13	14.1%	13	11.4%	0	0.0%	1	0.9%	1	1.1%	2	1.8%	0	0.0%	1	1.1%	92	44.7%	114	55.3%										
Linguistics Tripos	0	0.0%	2	50.0%	2	100.0%	2	50.0%	0	0.0%	0	0.0%	0	0.0%	0	0.0%	0	0.0%	0	0.0%	0	0.0%	0	0.0%	0	0.0%	0	0.0%	0	0.0%	2	33.3%	4	66.7%								
Management Studies Tripos	8	21.1%	5	18.5%	27	71.1%	20	74.1%	0	0.0%	0	0.0%	3	7.9%	2	7.4%	0	0.0%	0	0.0%	0	0.0%	0	0.0%	0	0.0%	0	0.0%	0	0.0%	38	58.5%	27	41.5%								
Manufacturing Engineering Tripos, Part II	4	18.2%	5	29.4%	12	54.5%	8	47.1%	0	0.0%	0	0.0%	6	27.3%	4	23.5%	0	0.0%	0	0.0%	0	0.0%	0	0.0%	0	0.0%	0	0.0%	0	0.0%	22	56.4%	17	43.6%								
Manufacturing Engineering Tripos, Part I	6	25.0%	4	28.6%	12	50.0%	6	42.9%	0	0.0%	0	0.0%	6	25.0%	4	28.6%	0	0.0%	0	0.0%	0	0.0%	0	0.0%	0	0.0%	0	0.0%	0	0.0%	24	63.2%	14	36.8%								
Mathematical Tripos, Part IA	62	31.6%	7	18.4%	77	39.3%	17	44.7%	0	0.0%	0	0.0%	40	20.4%	10	26.3%	11	5.6%	2	5.3%	6	3.1%	2	5.3%	2	5.3%	6	3.1%	2	5.3%	196	83.8%	38	16.2%								
Mathematical Tripos, Part IB	64	34.4%	8	18.2%	71	38.2%	21	47.7%	0	0.0%	0	0.0%	39	21.0%	12	27.3%	10	5.4%	2	4.5%	2	1.1%	1	2.3%	1	2.3%	186	80.9%	44	19.1%												
Mathematical Tripos, Part II	57	35.6%	5	11.6%	64	40.0%	21	48.8%	0	0.0%	0	0.0%	26	16.3%	13	30.2%	7	4.4%	3	7.0%	6	3.8%	1	2.3%	6	3.8%	160	78.8%	43	21.2%												
Mathematical Tripos Part III	108	56.8%	16	64.0%	78	41.1%	9	36.0%	0	0.0%	0	0.0%	0	0.0%	0	0.0%	0	0.0%	0	0.0%	4	2.1%	0	0.0%	4	2.1%	190	88.4%	25	11.6%												
Medical and Veterinary Sciences Tripos, Part IA	35	25.0%	40	21.2%	0	0.0%	0	0.0%	99	70.7%	139	73.5%	0	0.0%	0	0.0%	6	4.3%	8	4.2%	0	0.0%	2	1.1%	0	0.0%	140	42.6%	189	57.4%												
Medical and Veterinary Sciences Tripos, Part IB	25	18.1%	32	15.8%	71	51.4%	113	55.9%	0	0.0%	0	0.0%	38	27.5%	51	25.2%	3	2.2%	4	2.0%	1	0.7%	2	1.0%	2	1.0%	138	40.6%	202	59.4%												
Modern and Medieval Languages Tripos, Part IA	18	32.1%	23.5	19.1%	35	62.5%	81.5	66.3%	0	0.0%	0	0.0%	2.5	4.5%	17	13.8%	0.5	0.9%	0	0.0%	0	0.0%	0	0.0%	0	0.0%	56	31.3%	123	68.7%												
Modern and Medieval Languages Tripos, Part IB	15	25.4%	23	18.9%	37	62.7%	91	74.6%	0	0.0%	0	0.0%	7	11.9%	8	6.6%	0	0.0%	0	0.0%	0	0.0%	0	0.0%	0	0.0%	59	32.6%	122	67.4%												
Modern and Medieval Languages Tripos, Part II	21	48.8%	39	32.0%	18	41.9%	73	59.8%	0	0.0%	0	0.0%	4	9.3%	7	5.7%	0	0.0%	0	0.0%	0	0.0%	3	2.5%	0	0.0%	43	26.1%	122	73.9%												
Music Tripos, Part IA	7	16.3%	1	3.0%	23	53.5%	16	48.5%	0	0.0%	0	0.0%	13	30.2%	15	45.5%	0	0.0%	1	3.0%	0	0.0%	0	0.0%	0	0.0%	40	62.5%	33	43.4%												
Music Tripos, Part IB	8	20.0%	0	0.0%	27	67.5%	19	79.2%	0	0.0%	0	0.0%	5	12.5%	5	20.8%	0	0.0%	0	0.0%	0	0.0%	0	0.0%	0	0.0%	40	62.5%	24	37.5%												
Music Tripos, Part II	7	18.9%	3	10.7%	25	67.6%	22	78.6%	0	0.0%	0	0.0%	5	13.5%	2	7.1%	0	0.0%	0	0.0%	0	0.0%	0	0.0%	0	0.0%	37	56.9%	28	43.1%												
Natural Sciences Tripos, Part IA	93	28.6%	57	20.7%	0	0.0%	0	0.0%	208	64.0%	199	72.4%	0	0.0%	0	0.0%	20	6.2%	18	6.5%	4	1.2%	1	0.4%	325	54.2%	275	45.8%														
Natural Sciences Tripos, Part IB	88	28.8%	43	18.1%	103	33.7%	87	36.7%	0	0.0%	0	0.0%	96	31.4%	93	39.2%	15	4.9%	10	4.2%	4	1.3%	4	1.7%	306	56.4%	237	43.6%														
Natural Sciences Tripos, Part II: Astrophysics	5	38.5%	1	25.0%	6	46.2%	2	50.0%	0	0.0%	0	0.0%	2	15.4%	1	25.0%	0	0.0%	0	0.0%	0	0.0%	0	0.0%	0	0.0%	13	76.5%	4	23.5%												
Natural Sciences Tripos, Part II: Biochemistry	6	42.9%	3	14.3%	7	50.0%	17	81.0%	0	0.0%	0	0.0%	1	7.1%	1	4.8%	0	0.0%	0	0.0%	0	0.0%	0	0.0%	0	0.0%	14	40.0%	21	60.0%												
Natural Sciences Tripos, Part II: Biological and Biomedical Sciences	4	7.5%	12	12.6%	31	58.5%	63	66.3%	0	0.0%	0	0.0%	17	32.1%	18	18.9%	1	1.9%	1	1.1%	0	0.0%	1	1.1%	0	0.0%	53	35.8%	95	64.2%												
Natural Sciences Tripos, Part II: Chemistry	23	36.5%	14	35.9%	25	39.7%	15	38.5%	0	0.0%	0	0.0%	13	20.6%	7	17.9%	0	0.0%	3	7.7%	2	3.2%	0	0.0%	0	0.0%	63	61.8%	39	38.2%												
Natural Sciences Tripos, Part II: Experimental and Theoretical Physics	33	38.8%	12	63.2%	31	36.5%	6	31.6%	0	0.0%	0	0.0%	16	18.8%	0	0.0%	5	5.9%	1	5.3%	0	0.0%	0	0.0%	0	0.0%	85	81.7%	19	18.3%												
Natural Sciences Tripos, Part II: Genetics	2	40.0%	5	25.0%	3	60.0%	15	75.0%	0	0.0%	0	0.0%	0	0.0%	0	0.0%	0	0.0%	0	0.0%	0	0.0%	0	0.0%	0	0.0%	5	20.0%	20	80.0%												
Natural Sciences Tripos, Part II: Geological Sciences	2	11.8%	3	15.0%	14	82.4%	14	70.0%	0	0.0%	0	0.0%	1	5.9%	3	15.0%	0	0.0%	0	0.0%	0	0.0%	0	0.0%	0	0.0%	17	45.9%	20	54.1%												
Natural Sciences Tripos, Part II: History and Philosophy of Science	5	41.7%	3	25.0%	6	50.0%	9	75.0%	0	0.0%	0	0.0%	1	8.3%	0	0.0%	0	0.0%	0	0.0%	0	0.0%	0	0.0%	0	0.0%	12	50.0%	12	50.0%												
Natural Sciences Tripos, Part II: Materials Sciences and Metallurgy	3	21.4%	1	14.3%	7	50.0%	6	85.7%	0	0.0%	0	0.0%	2	14.3%	0	0.0%	2	14.3%	0	0.0%	0	0.0%	0	0.0%	0	0.0%	14	66.7%	7	33.3%												
Natural Sciences Tripos, Part II: Neuroscience	2	13.3%	5	33.3%	10	66.7%	8	53.3%	0	0.0%	0	0.0%	3	20.0%	2	13.3%	0	0.0%	0	0.0%	0	0.0%	0	0.0%	0	0.0%	15	50.0%	15	50.0%												
Natural Sciences Tripos, Part II: Pathology	8	34.8%	3	13.0%	14	60.9%	18	76.3%	0	0.0%	0	0.0%	1	4.3%	2	8.7%	0	0.0%	0	0.0%	0	0.0%	0	0.0%	0	0.0%	23	50.0%	23	50.0%												

	Class I:						Class II (1):						Class II:						Class II (2):						Class III:						Others:						Total:					
	Men			Women			Men			Women			Men			Women			Men			Women			Men			Women			Men			Women			Men			Women		
	No.	%	No.	%	No.	%	No.	%	No.	%	No.	%	No.	%	No.	%	No.	%	No.	%	No.	%	No.	%	No.	%	No.	%	No.	%	No.	%	No.	%	No.	%	No.	%				
Natural Sciences Tripos, Part I:	3	15.0%	2	15.4%	14	70.0%	10	76.9%	0	0.0%	0	0.0%	2	10.0%	1	7.7%	1	5.0%	0	0.0%	0	0.0%	0	0.0%	0	0.0%	0	0.0%	0	0.0%	0	0.0%	0	0.0%	20	60.6%	13	39.4%				
Pharmacology	0	0.0%	0	0.0%	1	100.0%	0	0.0%	0	0.0%	0	0.0%	0	0.0%	0	0.0%	0	0.0%	0	0.0%	0	0.0%	0	0.0%	0	0.0%	0	0.0%	0	0.0%	0	0.0%	1	100.0%	0	0.0%						
Natural Sciences Tripos, Part II:	0	0.0%	0	0.0%	4	100.0%	1	50.0%	0	0.0%	0	0.0%	0	0.0%	0	0.0%	1	50.0%	0	0.0%	0	0.0%	0	0.0%	0	0.0%	0	0.0%	0	0.0%	4	66.7%	2	33.3%								
Natural Sciences Tripos, Part I:	11	28.9%	7	19.4%	23	60.5%	29	80.6%	0	0.0%	0	0.0%	3	7.9%	0	0.0%	0	0.0%	0	0.0%	0	0.0%	0	0.0%	1	2.6%	0	0.0%	38	51.4%	36	48.6%										
Natural Sciences Tripos, Part II:	1	16.7%	3	27.3%	4	66.7%	8	72.7%	0	0.0%	0	0.0%	1	16.7%	0	0.0%	0	0.0%	0	0.0%	0	0.0%	0	0.0%	0	0.0%	0	0.0%	6	35.3%	11	64.7%										
Natural Sciences Tripos, Part I:	5	21.7%	6	21.4%	16	69.6%	22	78.6%	0	0.0%	0	0.0%	2	8.7%	0	0.0%	0	0.0%	0	0.0%	0	0.0%	0	0.0%	0	0.0%	0	0.0%	23	45.1%	28	54.9%										
Natural Sciences Tripos, Part II:	3	12.0%	11	22.0%	19	76.0%	37	74.0%	0	0.0%	0	0.0%	3	12.0%	2	4.0%	0	0.0%	0	0.0%	0	0.0%	0	0.0%	0	0.0%	0	0.0%	25	33.3%	50	66.7%										
Natural Sciences Tripos, Part III:	4	66.7%	1	100.0%	2	33.3%	0	0.0%	0	0.0%	0	0.0%	0	0.0%	0	0.0%	0	0.0%	0	0.0%	0	0.0%	0	0.0%	0	0.0%	0	0.0%	6	85.7%	1	14.3%										
Natural Sciences Tripos, Part I:	6	50.0%	4	40.0%	4	33.3%	6	60.0%	0	0.0%	0	0.0%	2	16.7%	0	0.0%	0	0.0%	0	0.0%	0	0.0%	0	0.0%	0	0.0%	0	0.0%	12	54.5%	10	45.5%										
Biochemistry	18	42.9%	12	36.4%	18	42.9%	17	51.5%	0	0.0%	0	0.0%	4	9.5%	4	12.1%	2	4.8%	0	0.0%	0	0.0%	0	0.0%	0	0.0%	0	0.0%	42	56.0%	33	44.0%										
Natural Sciences Tripos, Part III:	30	44.1%	9	47.4%	23	33.8%	7	36.8%	0	0.0%	0	0.0%	12	17.6%	3	15.8%	3	4.4%	0	0.0%	0	0.0%	0	0.0%	0	0.0%	0	0.0%	68	78.2%	19	21.8%										
Natural Sciences Tripos, Part I:	8	42.1%	3	18.8%	9	47.4%	12	75.0%	0	0.0%	0	0.0%	1	5.3%	1	6.3%	1	5.3%	0	0.0%	0	0.0%	0	0.0%	0	0.0%	0	0.0%	19	54.3%	16	45.7%										
Natural Sciences Tripos, Part II:	2	33.3%	2	50.0%	3	50.0%	1	25.0%	0	0.0%	0	0.0%	1	16.7%	1	25.0%	0	0.0%	0	0.0%	0	0.0%	0	0.0%	0	0.0%	0	0.0%	6	60.0%	4	40.0%										
Materials Science and Metallurgy	4	16.7%	6	18.2%	16	66.7%	21	63.6%	0	0.0%	0	0.0%	4	16.7%	6	18.2%	0	0.0%	0	0.0%	0	0.0%	0	0.0%	0	0.0%	0	0.0%	24	42.1%	33	57.9%										
Oriental Studies Tripos, Part I	6	40.0%	6	33.3%	9	60.0%	11	61.1%	0	0.0%	0	0.0%	0	0.0%	0	0.0%	1	5.6%	0	0.0%	0	0.0%	0	0.0%	0	0.0%	0	0.0%	15	45.5%	18	54.5%										
Oriental Studies Tripos, Part II	5	16.7%	1	4.5%	18	60.0%	18	81.8%	0	0.0%	0	0.0%	7	23.3%	3	13.6%	0	0.0%	0	0.0%	0	0.0%	0	0.0%	0	0.0%	0	0.0%	30	57.7%	22	42.3%										
Philosophy Tripos, Part IA	4	17.4%	5	19.2%	17	73.9%	18	69.2%	0	0.0%	0	0.0%	2	8.7%	2	7.7%	0	0.0%	0	0.0%	0	0.0%	0	0.0%	0	0.0%	0	0.0%	23	46.9%	26	53.1%										
Philosophy Tripos, Part IB	6	18.2%	5	23.8%	21	63.6%	12	57.1%	0	0.0%	0	0.0%	4	12.1%	4	19.0%	2	6.1%	0	0.0%	0	0.0%	0	0.0%	0	0.0%	0	0.0%	33	61.1%	21	38.9%										
Philosophy Tripos, Part II	8	20.0%	13	16.0%	29	72.5%	60	74.1%	0	0.0%	0	0.0%	3	7.5%	8	9.9%	0	0.0%	0	0.0%	0	0.0%	0	0.0%	0	0.0%	0	0.0%	40	33.1%	81	66.9%										
Social and Political Sciences Tripos, Part I	6	15.0%	8	11.4%	26	65.0%	50	71.4%	0	0.0%	0	0.0%	7	17.5%	12	17.1%	0	0.0%	0	0.0%	0	0.0%	0	0.0%	1	2.5%	0	0.0%	40	36.4%	70	63.6%										
Social and Political Sciences Tripos, Part IIA	6	14.0%	15	21.7%	31	72.1%	47	68.1%	0	0.0%	0	0.0%	6	14.0%	7	10.1%	0	0.0%	0	0.0%	0	0.0%	0	0.0%	0	0.0%	0	0.0%	43	38.4%	69	61.6%										
Social and Political Sciences Tripos, Part IIB	3	20.0%	4	10.3%	11	73.3%	28	71.8%	0	0.0%	0	0.0%	1	6.7%	7	17.9%	0	0.0%	0	0.0%	0	0.0%	0	0.0%	0	0.0%	0	0.0%	15	27.8%	39	72.2%										
Theological and Religious Studies Tripos, Part I	6	24.0%	8	22.2%	15	60.0%	27	75.0%	0	0.0%	0	0.0%	4	16.0%	1	2.8%	0	0.0%	0	0.0%	0	0.0%	0	0.0%	0	0.0%	0	0.0%	25	41.0%	36	59.0%										
Theological and Religious Studies Tripos, Part IIA	11	37.9%	13	33.3%	16	55.2%	24	61.5%	0	0.0%	0	0.0%	2	6.9%	1	2.6%	0	0.0%	0	0.0%	0	0.0%	0	0.0%	0	0.0%	0	0.0%	29	42.6%	39	57.4%										
Theological and Religious Studies Tripos, Part IIB	1,438	27.0%	860.5	18.4%	2,457	46.1%	2,615.5	55.8%	329	6.2%	391	8.3%	879.5	16.5%	681	14.5%	172.5	3.2%	104	2.2%	54	1.0%	37	0.8%	53.30	53.2%	4,689	46.8%														





## Preliminary and Other Examination Results, 2008

	Class I		Class II Division (1)		Class II Undivided		Class II Division (2)		Class III		Other Results		Total Candidates	
	No.	%	No.	%	No.	%	No.	%	No.	%	No.	%	No.	No.
LL.M. Examination	26	20.2%	84	65.1%	0	0.0%	14	10.9%	4	3.1%	1	0.8%		129
Preliminary Examination for Part I of the Anglo-Saxon, Norse and Celtic Tripos	8	27.6%	18	62.1%	0	0.0%	1	3.4%	2	6.9%	0	0.0%		29
Preliminary Examination for Part I of the Oriental Studies Tripos	6	18.8%	17	53.1%	0	0.0%	7	21.9%	1	3.1%	1	3.1%		32
Preliminary Examination for Part II of the Preliminary Examination for Part II of the Geographical Tripos	0	0.0%	1	100.0%	0	0.0%	0	0.0%	0	0.0%	0	0.0%		1
Preliminary Examination for Part II of the Historical Tripos	0	0.0%	0	0.0%	0	0.0%	1	100.0%	0	0.0%	0	0.0%		1
Preliminary Examination for Part II of the Natural Sciences Tripos: Chemistry	0	0.0%	6	100.0%	0	0.0%	0	0.0%	0	0.0%	0	0.0%		6
Second Examination for the Bachelor of Theology for Ministry Degree	1	7.1%	0	0.0%	13	92.9%	0	0.0%	0	0.0%	0	0.0%		14
<b>Totals</b>	<b>41</b>	<b>19.2%</b>	<b>127</b>	<b>59.6%</b>	<b>13</b>	<b>6.1%</b>	<b>23</b>	<b>10.8%</b>	<b>7</b>	<b>3.3%</b>	<b>2</b>	<b>0.9%</b>		<b>213</b>

This table excludes unclassified Preliminary Examinations in Classics, Education Studies, History, Linguistics, and the First Examination in Theology for Ministry (see Table 9a).



### Men's and Women's Preliminary and Other Examination Results, 2008

	Class I:				Class II (1):				Class II (2):				Class III:				Others:				Total:							
	Men		Women		Men		Women		Men		Women		Men		Women		Men		Women		Men		Women					
	No.	%	No.	%	No.	%	No.	%	No.	%	No.	%	No.	%	No.	%	No.	%	No.	%	No.	%	No.	%				
LL.M. Examination	16	20.3%	10	20.0%	51	64.6%	33	66.0%	0	0.0%	0	0.0%	7	8.9%	7	14.0%	4	5.1%	0	0.0%	1	1.3%	0	0.0%	79	61.2%	50	38.8%
Preliminary Examination for Part I of the Anglo-Saxon, Norse and Celtic Tripos	3	25.0%	5	29.4%	8	66.7%	10	58.8%	0	0.0%	0	0.0%	1	8.3%	0	0.0%	0	0.0%	2	11.8%	0	0.0%	0	0.0%	12	41.4%	17	58.6%
Preliminary Examination for Part I of the Oriental Studies Tripos	3	18.8%	3	18.8%	10	62.5%	7	43.8%	0	0.0%	0	0.0%	2	12.5%	5	31.3%	1	6.3%	0	0.0%	0	0.0%	0	0.0%	16	50.0%	16	50.0%
Preliminary Examination for Part II of the Preliminary Examination for Part II of the Geographical Tripos	0	0.0%	0	0.0%	0	0.0%	1	100.0%	0	0.0%	0	0.0%	0	0.0%	0	0.0%	0	0.0%	0	0.0%	0	0.0%	0	0.0%	0	0.0%	1	100.0%
Preliminary Examination for Part II of the Historical Tripos	0	0.0%	0	0.0%	0	0.0%	0	0.0%	0	0.0%	0	0.0%	0	0.0%	1	100.0%	0	0.0%	0	0.0%	0	0.0%	0	0.0%	0	0.0%	1	100.0%
Preliminary Examination for Part II of the Natural Sciences Tripos: Chemistry	0	0.0%	0	0.0%	1	100.0%	0	0.0%	0	0.0%	0	0.0%	0	0.0%	0	0.0%	0	0.0%	0	0.0%	0	0.0%	0	0.0%	1	100.0%	0	0.0%
Second Examination for the Bachelor of Theology for Ministry Degree	0	0.0%	1	14.3%	0	0.0%	0	0.0%	7	100.0%	6	85.7%	0	0.0%	0	0.0%	0	0.0%	0	0.0%	0	0.0%	0	0.0%	7	50.0%	7	50.0%
<b>Totals</b>	<b>22</b>	<b>18.5%</b>	<b>19</b>	<b>20.2%</b>	<b>74</b>	<b>62.2%</b>	<b>53</b>	<b>56.4%</b>	<b>7</b>	<b>5.9%</b>	<b>6</b>	<b>6.4%</b>	<b>10</b>	<b>8.4%</b>	<b>13</b>	<b>13.8%</b>	<b>5</b>	<b>4.2%</b>	<b>2</b>	<b>2.1%</b>	<b>1</b>	<b>0.8%</b>	<b>1</b>	<b>1.1%</b>	<b>119</b>	<b>55.9%</b>	<b>94</b>	<b>44.1%</b>

This table excludes unclassified Preliminary Examinations in Classics, Education Studies, History, Linguistics, and the First Examination in Theology for Ministry (see Table 9a).



## Results in All Examinations, 2008

	Class I		Class II Division (1)		Class II Undivided		Class II Division (2)		Class III		Other Results		Total Candidates	
	No.	%	No.	%	No.	%	No.	%	No.	%	No.	%	No.	%
Anglo-Saxon, Norse and Celtic	17	22.1%	51	66.2%	0	0.0%	6	7.8%	2	2.6%	1	1.3%	77	
Archaeology and Anthropology	55	25.5%	143	66.2%	0	0.0%	16	7.4%	1	0.5%	1	0.5%	216	
Architecture	17	13.6%	70	56.0%	0	0.0%	29	23.2%	8	6.4%	1	0.8%	125	
Chemical Engineering	37	25.0%	69	46.6%	0	0.0%	31	20.9%	9	6.1%	2	1.4%	148	
Classics	40	16.6%	97	40.2%	75	31.1%	27	11.2%	2	0.8%	0	0.0%	241	
Computer Science	52	24.9%	65	31.1%	0	0.0%	74	35.4%	16	7.7%	2	1.0%	209	
Economics	117	24.7%	222	46.8%	0	0.0%	107	22.6%	25	5.3%	3	0.6%	474	
Education	34	20.7%	110	67.1%	0	0.0%	17	10.4%	2	1.2%	1	0.6%	164	
Engineering	252	26.0%	412	42.5%	0	0.0%	242	25.0%	50	5.2%	13	1.3%	969	
English	83	19.8%	297	70.9%	0	0.0%	34	8.1%	5	1.2%	0	0.0%	419	
Geography	49	16.3%	195	64.8%	0	0.0%	56	18.6%	1	0.3%	0	0.0%	301	
History	68	16.4%	323	77.8%	0	0.0%	20	4.8%	3	0.7%	1	0.2%	415	
History of Art	9	10.0%	75	83.3%	0	0.0%	6	6.7%	0	0.0%	0	0.0%	90	
Land Economy	15	9.9%	117	77.0%	0	0.0%	16	10.5%	4	2.6%	0	0.0%	152	
Law	93	12.2%	505	66.4%	0	0.0%	135	17.8%	12	1.6%	15	2.0%	760	
Linguistics	2	33.3%	4	66.7%	0	0.0%	0	0.0%	0	0.0%	0	0.0%	6	
Management Studies	13	20.0%	47	72.3%	0	0.0%	5	7.7%	0	0.0%	0	0.0%	65	
Manufacturing Engineering	19	24.7%	38	49.4%	0	0.0%	20	26.0%	0	0.0%	0	0.0%	77	
Mathematics	327	37.1%	358	40.6%	0	0.0%	140	15.9%	35	4.0%	22	2.5%	882	
Medical and Veterinary Science	132	19.7%	184	27.5%	238	35.6%	89	13.3%	21	3.1%	5	0.7%	669	
Modern and Medieval Languages	139.5	26.6%	335.5	63.9%	0	0.0%	45.5	8.7%	0.5	0.1%	4	0.8%	525	
Music	26	12.7%	132	64.4%	0	0.0%	45	22.0%	1	0.5%	1	0.5%	205	
Natural Sciences	587	26.4%	808	36.3%	407	18.3%	324	14.6%	83	3.7%	17	0.8%	2226	
Oriental Studies	28	23.0%	74	60.7%	0	0.0%	18	14.8%	1	0.8%	1	0.8%	122	
Philosophy	26	16.8%	104	67.1%	0	0.0%	22	14.2%	2	1.3%	1	0.6%	155	
Social and Political Sciences	56	16.3%	243	70.8%	0	0.0%	43	12.5%	0	0.0%	1	0.3%	343	
Theological and Religious Studies	45	24.6%	121	66.1%	0	0.0%	16	8.7%	0	0.0%	1	0.5%	183	
Theology for Ministry	1	7.1%	0	0.0%	13	92.9%	0	0.0%	0	0.0%	0	0.0%	14	
<b>Totals</b>	<b>2,339.5</b>	<b>22.9%</b>	<b>5,199.5</b>	<b>50.8%</b>	<b>733</b>	<b>7.2%</b>	<b>1,583.5</b>	<b>15.5%</b>	<b>283.5</b>	<b>2.8%</b>	<b>93</b>	<b>0.9%</b>	<b>10,232</b>	

This table excludes unclassified Preliminary Examinations in Classics, Education Studies, History, Linguistics, and the First Examination in Theology for Ministry (see Table 9a).



## Men's and Women's Results in All Examinations, 2008

	Class I:				Class II (1):				Class II:				Class II (2):				Class III:				Others:				Total:					
	Men		Women		Men		Women		Men		Women		Men		Women		Men		Women		Men		Women		Men		Women			
	No.	%	No.	%	No.	%	No.	%	No.	%	No.	%	No.	%	No.	%	No.	%	No.	%	No.	%	No.	%	No.	%	No.	%		
Anglo-Saxon, Norse and Celtic	7	20.6%	10	23.3%	22	64.7%	29	67.4%	0	0.0%	0	0.0%	4	11.8%	2	4.7%	0	0.0%	2	4.7%	1	2.9%	0	0.0%	34	44.2%	43	56.8%		
Archaeology and Anthropology	17	27.9%	38	24.5%	37	60.7%	106	66.4%	0	0.0%	0	0.0%	5	8.2%	11	7.1%	1	1.6%	0	0.0%	1	1.6%	0	0.0%	61	28.2%	155	71.8%		
Architecture	6	10.7%	11	15.9%	29	51.8%	41	59.4%	0	0.0%	0	0.0%	15	26.8%	14	20.3%	6	10.7%	2	2.9%	0	0.0%	1	1.4%	56	44.8%	69	55.2%		
Chemical Engineering	25	26.3%	12	22.6%	42	44.2%	27	50.9%	0	0.0%	0	0.0%	21	22.1%	10	18.9%	5	5.3%	4	7.5%	2	2.1%	0	0.0%	95	36.8%	53	35.8%		
Classics	15	17.2%	25	16.2%	37	42.5%	60	39.0%	22	25.3%	53	34.4%	13	14.9%	14	9.1%	0	0.0%	2	1.3%	0	0.0%	0	0.0%	87	36.1%	154	63.9%		
Computer Science	51	26.7%	1	5.6%	62	32.5%	3	16.7%	0	0.0%	0	0.0%	65	34.0%	9	50.0%	12	6.3%	4	22.2%	1	0.5%	1	5.6%	191	91.4%	18	8.6%		
Economics	74	25.1%	43	24.0%	140	47.5%	82	45.8%	0	0.0%	0	0.0%	64	21.7%	43	24.0%	15	5.1%	10	5.6%	2	0.7%	1	0.6%	295	62.2%	179	37.8%		
Education	6	22.2%	28	20.4%	17	63.0%	93	67.9%	0	0.0%	0	0.0%	4	14.8%	13	9.5%	0	0.0%	2	1.5%	0	0.0%	0	0.0%	27	16.5%	137	83.5%		
Engineering	208	28.2%	44	19.0%	315	42.7%	97	42.0%	0	0.0%	0	0.0%	171	23.2%	71	30.7%	35	4.7%	15	6.5%	9	1.2%	4	1.7%	738	76.2%	231	23.8%		
English	39	28.7%	44	15.5%	88	64.7%	209	73.9%	0	0.0%	0	0.0%	8	5.9%	26	9.2%	1	0.7%	4	1.4%	0	0.0%	0	0.0%	136	32.5%	283	67.5%		
Geography	28	21.9%	21	12.1%	79	61.7%	116	67.1%	0	0.0%	0	0.0%	20	15.6%	36	20.8%	1	0.8%	0	0.0%	0	0.0%	0	0.0%	128	42.5%	173	57.5%		
History	45	21.4%	23	11.2%	152	72.4%	171	83.4%	0	0.0%	0	0.0%	11	5.2%	9	4.4%	2	1.0%	1	0.5%	0	0.0%	1	0.5%	210	50.6%	205	49.4%		
History of Art	4	14.3%	5	8.1%	20	71.4%	55	88.7%	0	0.0%	0	0.0%	4	14.3%	2	3.2%	0	0.0%	0	0.0%	0	0.0%	0	0.0%	28	31.1%	62	68.9%		
Land Economy	8	10.4%	7	9.3%	57	74.0%	60	80.0%	0	0.0%	0	0.0%	8	10.4%	4	5.2%	0	0.0%	0	0.0%	0	0.0%	0	0.0%	77	50.7%	75	49.3%		
Law	49	13.8%	44	10.9%	238	66.9%	267	66.1%	0	0.0%	0	0.0%	56	15.7%	79	19.6%	5	1.4%	7	1.7%	8	2.2%	7	1.7%	356	46.8%	404	53.2%		
Linguistics	0	0.0%	2	50.0%	2	100.0%	2	50.0%	0	0.0%	0	0.0%	0	0.0%	0	0.0%	0	0.0%	0	0.0%	0	0.0%	0	0.0%	0	0.0%	2	33.3%	4	66.7%
Management Studies	8	21.1%	5	18.5%	27	71.1%	20	74.1%	0	0.0%	0	0.0%	3	7.9%	2	7.4%	0	0.0%	0	0.0%	0	0.0%	0	0.0%	38	58.5%	27	41.5%		
Manufacturing Engineering	10	21.7%	9	29.0%	24	52.2%	14	45.2%	0	0.0%	0	0.0%	12	26.1%	8	25.8%	0	0.0%	0	0.0%	0	0.0%	0	0.0%	46	59.7%	31	40.3%		
Mathematics	291	39.8%	36	24.0%	290	39.6%	68	45.3%	0	0.0%	0	0.0%	105	14.3%	35	23.3%	28	3.8%	7	4.7%	18	2.5%	4	2.7%	732	83.0%	150	17.0%		
Medical and Veterinary Science	60	21.6%	72	18.4%	71	25.5%	113	28.9%	99	35.6%	139	35.5%	38	13.7%	51	13.0%	9	3.2%	12	3.1%	1	0.4%	4	1.0%	278	41.6%	391	58.4%		
Modern and Medieval Languages	54	34.2%	85.5	23.3%	90	57.0%	245.5	66.9%	0	0.0%	0	0.0%	13.5	8.5%	32	8.7%	0.5	0.3%	0	0.0%	0	0.0%	0	0.0%	158	30.1%	367	69.9%		
Music	22	18.3%	4	4.7%	75	62.5%	57	67.1%	0	0.0%	0	0.0%	23	19.2%	22	25.9%	0	0.0%	1	1.2%	0	0.0%	1	1.2%	120	58.5%	85	41.5%		
Natural Sciences	365	30.0%	222	22.0%	398	41.0%	410	40.6%	208	17.1%	199	19.7%	184	15.1%	140	13.9%	50	4.1%	33	3.3%	11	0.9%	6	0.6%	1216	54.5%	1010	45.4%		
Oriental Studies	13	23.6%	15	22.4%	35	63.6%	39	58.2%	0	0.0%	0	0.0%	6	10.9%	12	17.9%	1	1.8%	0	0.0%	0	0.0%	0	0.0%	55	45.1%	67	54.9%		
Philosophy	15	17.4%	11	15.9%	56	65.1%	48	69.6%	0	0.0%	0	0.0%	13	15.1%	9	13.0%	2	2.3%	0	0.0%	0	0.0%	1	1.4%	86	55.5%	69	44.5%		
Social and Political Sciences	20	16.3%	36	16.4%	86	69.9%	157	71.4%	0	0.0%	0	0.0%	16	13.0%	27	12.3%	0	0.0%	0	0.0%	0	0.0%	1	0.8%	123	35.9%	220	64.1%		
Theological and Religious Studies	20	29.0%	25	21.9%	42	60.9%	79	69.3%	0	0.0%	0	0.0%	7	10.1%	9	7.9%	0	0.0%	0	0.0%	0	0.0%	0	0.0%	69	37.7%	114	62.3%		
Theology for Ministry	0	0.0%	1	14.3%	0	0.0%	0	0.0%	7	100.0%	6	85.7%	0	0.0%	0	0.0%	0	0.0%	0	0.0%	0	0.0%	0	0.0%	0	0.0%	7	50.0%	7	50.0%
<b>Totals</b>	<b>1,460</b>	<b>26.8%</b>	<b>879.5</b>	<b>18.4%</b>	<b>2,531</b>	<b>46.4%</b>	<b>2,669</b>	<b>55.8%</b>	<b>336</b>	<b>6.2%</b>	<b>397</b>	<b>8.3%</b>	<b>889.5</b>	<b>16.3%</b>	<b>694</b>	<b>14.5%</b>	<b>177.5</b>	<b>3.3%</b>	<b>106</b>	<b>2.2%</b>	<b>55</b>	<b>1.0%</b>	<b>38</b>	<b>0.8%</b>	<b>5,449</b>	<b>53.3%</b>	<b>4,783</b>	<b>46.7%</b>		

This table excludes unclassified Preliminary Examinations in Classics, Education Studies, History, Linguistics, and the First Examination in Theology for Ministry (see Table 9a).





## Undergraduate Examination Results by Ethnic Background, 2008 (All Candidates)

	Class I		Class II Division (1)		Class II Undivided		Class II Division (2)		Class III		Other Results		Total Candidates	
	No.	%	No.	%	No.	%	No.	%	No.	%	No.	%	No.	%
White.	1,596.5	23.2%	3,577	52.0%	533	7.7%	962	14.0%	162.5	2.4%	49	0.7%	6,880	67.2%
Asian or Asian British - Bangladeshi.	2	12.5%	8	50.0%	1	6.3%	5	31.3%	0	0.0%	0	0.0%	16	0.2%
Asian or Asian British - Indian.	51	18.2%	139	49.6%	26	9.3%	47	16.8%	13	4.6%	4	1.4%	280	2.7%
Asian or Asian British - Pakistani.	8	17.0%	19	40.4%	5	10.6%	14	29.8%	0	0.0%	1	2.1%	47	0.5%
Chinese.	163	25.9%	269	42.7%	38	6.0%	117	18.6%	26	4.1%	17	2.7%	630	6.2%
Other Asian background.	46	23.8%	72	37.3%	27	14.0%	38	19.7%	8	4.1%	2	1.0%	193	1.9%
Black or Black British - African.	4	7.1%	26	46.4%	5	8.9%	12	21.4%	8	14.3%	1	1.8%	56	0.5%
Black or Black British - Caribbean.	1	5.3%	7	36.8%	0	0.0%	10	52.6%	1	5.3%	0	0.0%	19	0.2%
Other Black background.	1	11.1%	5	55.6%	0	0.0%	3	33.3%	0	0.0%	0	0.0%	9	0.1%
Mixed - White and Asian.	31	18.2%	88	51.8%	16	9.4%	32	18.8%	2	1.2%	1	0.6%	170	1.7%
Mixed - White and Black African.	2.5	14.7%	9.5	55.9%	2	11.8%	2	11.8%	1	5.9%	0	0.0%	17	0.2%
Mixed - White and Black Caribbean.	6	22.2%	14	51.9%	0	0.0%	6	22.2%	1	3.7%	0	0.0%	27	0.3%
Other Mixed background.	26	25.7%	49	48.5%	7	6.9%	14	13.9%	3	3.0%	2	2.0%	101	1.0%
Other Ethnic background.	11	14.5%	42.5	55.9%	6	7.9%	13.5	17.8%	3	3.9%	0	0.0%	76	0.7%
Information Refused.	238	19.9%	649	54.4%	19	1.6%	240	20.1%	39	3.3%	9	0.8%	1,194	11.7%
Not known.	152.5	29.5%	225.5	43.6%	48	9.3%	68	13.2%	16	3.1%	7	1.4%	517	5.1%
<b>Totals</b>	<b>2,339.5</b>	<b>22.9%</b>	<b>5,199.5</b>	<b>50.8%</b>	<b>733</b>	<b>7.2%</b>	<b>1,583.5</b>	<b>15.5%</b>	<b>283.5</b>	<b>2.8%</b>	<b>93</b>	<b>0.9%</b>	<b>10,232</b>	<b>100.0%</b>



## Undergraduate Examination Results by Ethnic Background, Michaelmas Term 2007 Entrants

	Class I		Class II Division (1)		Class II Undivided		Class II Division (2)		Class III		Other Results		Total Candidates	
	No.	%	No.	%	No.	%	No.	%	No.	%	No.	%	No.	%
White.	454	21.9%	752.5	36.3%	511	24.7%	262	12.6%	73.5	3.5%	19	0.9%	2,072	65.8%
Asian or Asian British - Bangladeshi.	1	14.3%	2	28.6%	1	14.3%	3	42.9%	0	0.0%	0	0.0%	7	0.2%
Asian or Asian British - Indian.	14	15.9%	30	34.1%	26	29.5%	7	8.0%	8	9.1%	3	3.4%	88	2.8%
Asian or Asian British - Pakistani.	4	30.8%	2	15.4%	5	38.5%	2	15.4%	0	0.0%	0	0.0%	13	0.4%
Chinese.	44	24.3%	60	33.1%	37	20.4%	27	14.9%	10	5.5%	3	1.7%	181	5.7%
Other Asian background.	19	24.4%	20	25.6%	26	33.3%	10	12.8%	3	3.8%	0	0.0%	78	2.5%
Black or Black British - African.	4	21.1%	5	26.3%	5	26.3%	3	15.8%	2	10.5%	0	0.0%	19	0.6%
Black or Black British - Caribbean.	0	0.0%	4	66.7%	0	0.0%	2	33.3%	0	0.0%	0	0.0%	6	0.2%
Other Black background.	1	100.0%	0	0.0%	0	0.0%	0	0.0%	0	0.0%	0	0.0%	1	0.0%
Mixed - White and Asian.	11	18.3%	24	40.0%	15	25.0%	9	15.0%	1	1.7%	0	0.0%	60	1.9%
Mixed - White and Black African.	0.5	10.0%	2.5	50.0%	2	40.0%	0	0.0%	0	0.0%	0	0.0%	5	0.2%
Mixed - White and Black Caribbean.	1	14.3%	3	42.9%	0	0.0%	2	28.6%	1	14.3%	0	0.0%	7	0.2%
Other Mixed background.	7	25.0%	9	32.1%	7	25.0%	3	10.7%	2	7.1%	0	0.0%	28	0.9%
Other Ethnic background.	3	11.5%	10.5	40.4%	6	23.1%	5.5	21.2%	1	3.8%	0	0.0%	26	0.8%
Information Refused.	29.5	34.3%	26.5	30.8%	10	11.6%	16	18.6%	4	4.7%	0	0.0%	86	2.7%
Not known.	152.5	32.4%	196.5	41.7%	47	10.0%	54	11.5%	15	3.2%	6	1.3%	471	15.0%
<b>Totals</b>	<b>745.5</b>	<b>23.7%</b>	<b>1,147.5</b>	<b>36.5%</b>	<b>698</b>	<b>22.2%</b>	<b>405.5</b>	<b>12.9%</b>	<b>120.5</b>	<b>3.8%</b>	<b>31</b>	<b>1.0%</b>	<b>3,148</b>	<b>100.0%</b>



## Undergraduate Examination Results by Ethnic Background, Michaelmas Term 2006 Entrants

	Class I		Class II Division (1)		Class II Undivided		Class II Division (2)		Class III		Other Results		Total Candidates	
	No.	%	No.	%	No.	%	No.	%	No.	%	No.	%	No.	%
White.	387.5	20.9%	1,046	56.5%	21	1.1%	335	18.1%	49	2.6%	14	0.8%	1,852	57.8%
Asian or Asian British - Bangladeshi.	0	0.0%	3	75.0%	0	0.0%	1	25.0%	0	0.0%	0	0.0%	4	0.1%
Asian or Asian British - Indian.	14	16.9%	45	54.2%	0	0.0%	20	24.1%	3	3.6%	1	1.2%	83	2.6%
Asian or Asian British - Pakistani.	2	11.8%	8	47.1%	0	0.0%	6	35.3%	0	0.0%	1	5.9%	17	0.5%
Chinese.	51	23.8%	99	46.3%	1	0.5%	49	22.9%	9	4.2%	5	2.3%	214	6.7%
Other Asian background.	15	30.6%	16	32.7%	1	2.0%	16	32.7%	1	2.0%	0	0.0%	49	1.5%
Black or Black British - African.	0	0.0%	6	46.2%	0	0.0%	3	23.1%	4	30.8%	0	0.0%	13	0.4%
Black or Black British - Caribbean.	0	0.0%	2	40.0%	0	0.0%	2	40.0%	1	20.0%	0	0.0%	5	0.2%
Other Black background.	0	0.0%	3	60.0%	0	0.0%	2	40.0%	0	0.0%	0	0.0%	5	0.2%
Mixed - White and Asian.	5	11.6%	21	48.8%	1	2.3%	15	34.9%	0	0.0%	1	2.3%	43	1.3%
Mixed - White and Black African.	1	14.3%	3	42.9%	0	0.0%	2	28.6%	1	14.3%	0	0.0%	7	0.2%
Mixed - White and Black Caribbean.	2	22.2%	4	44.4%	0	0.0%	3	33.3%	0	0.0%	0	0.0%	9	0.3%
Other Mixed background.	5	19.2%	14	53.8%	0	0.0%	6	23.1%	0	0.0%	1	3.8%	26	0.8%
Other Ethnic background.	5	16.1%	21	67.7%	0	0.0%	4	12.9%	1	3.2%	0	0.0%	31	1.0%
Information Refused.	136.5	17.3%	440.5	56.0%	8	1.0%	171	21.7%	24	3.0%	7	0.9%	787	24.6%
Not known.	8	13.8%	33	56.9%	1	1.7%	14	24.1%	1	1.7%	1	1.7%	58	1.8%
<b>Totals</b>	<b>632</b>	<b>19.7%</b>	<b>1,764</b>	<b>55.1%</b>	<b>33</b>	<b>1.0%</b>	<b>649</b>	<b>20.3%</b>	<b>94</b>	<b>2.9%</b>	<b>31</b>	<b>1.0%</b>	<b>3,203</b>	<b>100.0%</b>



## Undergraduate Examination Results by Ethnic Background, Michaelmas Term 2005 Entrants

	Class I		Class II Division (1)		Class II Undivided		Class II Division (2)		Class III		Other Results		Total Candidates	
	No.	%	No.	%	No.	%	No.	%	No.	%	No.	%	No.	%
White.	525	23.8%	1,382	62.6%	0	0.0%	264	12.0%	27	1.2%	10	0.5%	2,208	74.4%
Asian or Asian British - Bangladeshi.	1	25.0%	2	50.0%	0	0.0%	1	25.0%	0	0.0%	0	0.0%	4	0.1%
Asian or Asian British - Indian.	16	19.0%	49	58.3%	0	0.0%	17	20.2%	2	2.4%	0	0.0%	84	2.8%
Asian or Asian British - Pakistani.	2	15.4%	8	61.5%	0	0.0%	3	23.1%	0	0.0%	0	0.0%	13	0.4%
Chinese.	50	29.4%	78	45.9%	0	0.0%	28	16.5%	7	4.1%	7	4.1%	170	5.7%
Other Asian background.	11	20.8%	31	58.5%	0	0.0%	8	15.1%	1	1.9%	2	3.8%	53	1.8%
Black or Black British - African.	0	0.0%	14	66.7%	0	0.0%	5	23.8%	1	4.8%	1	4.8%	21	0.7%
Black or Black British - Caribbean.	1	14.3%	1	14.3%	0	0.0%	5	71.4%	0	0.0%	0	0.0%	7	0.2%
Other Black background.	0	0.0%	2	66.7%	0	0.0%	1	33.3%	0	0.0%	0	0.0%	3	0.1%
Mixed - White and Asian.	10	20.0%	33	66.0%	0	0.0%	6	12.0%	1	2.0%	0	0.0%	50	1.7%
Mixed - White and Black African.	1	25.0%	3	75.0%	0	0.0%	0	0.0%	0	0.0%	0	0.0%	4	0.1%
Mixed - White and Black Caribbean.	2	22.2%	6	66.7%	0	0.0%	1	11.1%	0	0.0%	0	0.0%	9	0.3%
Other Mixed background.	8	23.5%	22	64.7%	0	0.0%	2	5.9%	1	2.9%	1	2.9%	34	1.1%
Other Ethnic background.	3	18.8%	8	50.0%	0	0.0%	4	25.0%	1	6.3%	0	0.0%	16	0.5%
Information Refused.	61	21.6%	162	57.4%	1	0.4%	46	16.3%	10	3.5%	2	0.7%	282	9.5%
Not known.	2	25.0%	6	75.0%	0	0.0%	0	0.0%	0	0.0%	0	0.0%	8	0.3%
<b>Totals</b>	<b>693</b>	<b>23.4%</b>	<b>1,807</b>	<b>60.9%</b>	<b>1</b>	<b>0.0%</b>	<b>391</b>	<b>13.2%</b>	<b>51</b>	<b>1.7%</b>	<b>23</b>	<b>0.8%</b>	<b>2,966</b>	<b>100.0%</b>





## Undergraduate Examination Results by Ethnic Background, Michaelmas Term 2004 Entrants

	Class I		Class II Division (1)		Class II Undivided		Class II Division (2)		Class III		Other Results		Total Candidates	
	No.	%	No.	%	No.	%	No.	%	No.	%	No.	%	No.	%
White.	210	30.3%	375	54.1%	1	0.1%	93	13.4%	9	1.3%	5	0.7%	693	78.8%
Asian or Asian British - Bangladeshi.	0	0.0%	1	100.0%	0	0.0%	0	0.0%	0	0.0%	0	0.0%	1	0.1%
Asian or Asian British - Indian.	7	30.4%	14	60.9%	0	0.0%	2	8.7%	0	0.0%	0	0.0%	23	2.6%
Asian or Asian British - Pakistani.	0	0.0%	1	25.0%	0	0.0%	3	75.0%	0	0.0%	0	0.0%	4	0.5%
Chinese.	18	27.7%	32	49.2%	0	0.0%	13	20.0%	0	0.0%	2	3.1%	65	7.4%
Other Asian background.	1	7.7%	5	38.5%	0	0.0%	4	30.8%	3	23.1%	0	0.0%	13	1.5%
Black or Black British - African.	0	0.0%	1	50.0%	0	0.0%	1	50.0%	0	0.0%	0	0.0%	2	0.2%
Black or Black British - Caribbean.	0	0.0%	0	0.0%	0	0.0%	1	100.0%	0	0.0%	0	0.0%	1	0.1%
Mixed - White and Asian.	4	25.0%	10	62.5%	0	0.0%	2	12.5%	0	0.0%	0	0.0%	16	1.8%
Mixed - White and Black African.	0	0.0%	1	100.0%	0	0.0%	0	0.0%	0	0.0%	0	0.0%	1	0.1%
Mixed - White and Black Caribbean.	1	50.0%	1	50.0%	0	0.0%	0	0.0%	0	0.0%	0	0.0%	2	0.2%
Other Mixed background.	6	46.2%	4	30.8%	0	0.0%	3	23.1%	0	0.0%	0	0.0%	13	1.5%
Other Ethnic background.	0	0.0%	3	100.0%	0	0.0%	0	0.0%	0	0.0%	0	0.0%	3	0.3%
Information Refused.	11	28.9%	20	52.6%	0	0.0%	6	15.8%	1	2.6%	0	0.0%	38	4.3%
Not known.	0	0.0%	3	75.0%	0	0.0%	1	25.0%	0	0.0%	0	0.0%	4	0.5%
<b>Totals</b>	<b>258</b>	<b>29.4%</b>	<b>471</b>	<b>53.6%</b>	<b>1</b>	<b>0.1%</b>	<b>129</b>	<b>14.7%</b>	<b>13</b>	<b>1.5%</b>	<b>7</b>	<b>0.8%</b>	<b>879</b>	<b>100.0%</b>



## Undergraduate Examination Results by Disability, 2008 (All Candidates)

	Class I		Class II Division (1)		Class II Undivided		Class II Division (2)		Class III		Other Results		Total Candidates	
	No.	%	No.	%	No.	%	No.	%	No.	%	No.	%	No.	%
No disability.	2,042	23.0%	4,447	50.2%	710	8.0%	1,341	15.1%	242.5	2.7%	79	0.9%	8,861	86.6%
A specific learning difficulty e.g. dyslexia.	29.5	17.7%	83.5	50.0%	9	5.4%	32	19.2%	7	4.2%	6	3.6%	167	1.6%
Blind/are partially sighted.	1	14.3%	4	57.1%	1	14.3%	0	0.0%	0	0.0%	1	14.3%	7	0.1%
Deaf/have a hearing impairment.	6	25.0%	10	41.7%	2	8.3%	3	12.5%	3	12.5%	0	0.0%	24	0.2%
Wheelchair user/have mobility difficulties.	4	33.3%	7	58.3%	0	0.0%	1	8.3%	0	0.0%	0	0.0%	12	0.1%
Mental health difficulties.	0	0.0%	3	50.0%	0	0.0%	2	33.3%	0	0.0%	1	16.7%	6	0.1%
An unseen disability, e.g. diabetes, epilepsy, asthma.	13	23.2%	29.5	52.7%	1	1.8%	10.5	18.8%	1	1.8%	1	1.8%	56	0.5%
Autistic Spectrum Disorder.	5	35.7%	6	42.9%	0	0.0%	1	7.1%	2	14.3%	0	0.0%	14	0.1%
Multiple disabilities.	3	27.3%	5	45.5%	1	9.1%	1	9.1%	1	9.1%	0	0.0%	11	0.1%
A disability not listed above.	18	22.8%	45	57.0%	1	1.3%	14	17.7%	1	1.3%	0	0.0%	79	0.8%
Information not sought.	2	33.3%	4	66.7%	0	0.0%	0	0.0%	0	0.0%	0	0.0%	6	0.1%
Information refused.	16	32.7%	23	46.9%	2	4.1%	7	14.3%	1	2.0%	0	0.0%	49	0.5%
Not known.	200	21.3%	533	56.7%	6	0.6%	171	18.2%	25	2.7%	5	0.5%	940	9.2%
<b>Totals</b>	<b>2,340</b>	<b>22.9%</b>	<b>5,200</b>	<b>50.8%</b>	<b>733</b>	<b>7.2%</b>	<b>1,584</b>	<b>15.5%</b>	<b>283.5</b>	<b>2.8%</b>	<b>93</b>	<b>0.9%</b>	<b>10,232</b>	<b>100.0%</b>



## Undergraduate Examination Results by Disability, Michaelmas Term 2007 Entrants

	Class I		Class II Division (1)		Class II Undivided		Class II Division (2)		Class III		Other Results		Total Candidates	
	No.	%	No.	%	No.	%	No.	%	No.	%	No.	%	No.	%
No disability.	705	23.7%	1,068	35.9%	681	22.9%	381	12.8%	113.5	3.8%	28	0.9%	2,976	94.5%
A specific learning difficulty e.g.dyslexia.	4.5	12.2%	12.5	33.8%	9	24.3%	7	18.9%	2	5.4%	2	5.4%	37	1.2%
Blind/are partially sighted.	1	33.3%	1	33.3%	1	33.3%	0	0.0%	0	0.0%	0	0.0%	3	0.1%
Deaf/have a hearing impairment.	1	11.1%	3	33.3%	2	22.2%	1	11.1%	2	22.2%	0	0.0%	9	0.3%
Wheelchair user/have mobility difficulties.	2	28.6%	4	57.1%	0	0.0%	1	14.3%	0	0.0%	0	0.0%	7	0.2%
Mental health difficulties.	0	0.0%	1	100.0%	0	0.0%	0	0.0%	0	0.0%	0	0.0%	1	0.0%
An unseen disability, e.g. diabetes, epilepsy, asthma.	2	18.2%	4.5	40.9%	1	9.1%	3.5	31.8%	0	0.0%	0	0.0%	11	0.3%
Autistic Spectrum Disorder.	2	40.0%	3	60.0%	0	0.0%	0	0.0%	0	0.0%	0	0.0%	5	0.2%
Multiple disabilities.	1	25.0%	2	50.0%	1	25.0%	0	0.0%	0	0.0%	0	0.0%	4	0.1%
A disability not listed above.	2	12.5%	9	56.3%	1	6.3%	3	18.8%	1	6.3%	0	0.0%	16	0.5%
Information not sought.	0	0.0%	1	100.0%	0	0.0%	0	0.0%	0	0.0%	0	0.0%	1	0.0%
Information refused.	12	29.3%	19	46.3%	2	4.9%	7	17.1%	1	2.4%	0	0.0%	41	1.3%
Not known.	13	35.1%	20	54.1%	0	0.0%	2	5.4%	1	2.7%	1	2.7%	37	1.2%
<b>Totals</b>	<b>745.5</b>	<b>23.7%</b>	<b>1,148</b>	<b>36.5%</b>	<b>698</b>	<b>22.2%</b>	<b>405.5</b>	<b>12.9%</b>	<b>120.5</b>	<b>3.8%</b>	<b>31</b>	<b>1.0%</b>	<b>3,148</b>	<b>100.0%</b>



## Undergraduate Examination Results by Disability, Michaelmas Term 2006 Entrants

	Class I		Class II Division (1)		Class II Undivided		Class II Division (2)		Class III		Other Results		Total Candidates	
	No.	%	No.	%	No.	%	No.	%	No.	%	No.	%	No.	%
No disability.	527	19.6%	1,491	55.5%	27	1.0%	540	20.1%	76	2.8%	27	1.0%	2,688	83.9%
A specific learning difficulty e.g.dyslexia.	6	13.0%	26	56.5%	0	0.0%	12	26.1%	2	4.3%	0	0.0%	46	1.4%
Blind/are partially sighted.	0	0.0%	1	100.0%	0	0.0%	0	0.0%	0	0.0%	0	0.0%	1	0.0%
Deaf/have a hearing impairment.	2	33.3%	2	33.3%	0	0.0%	1	16.7%	1	16.7%	0	0.0%	6	0.2%
Mental health difficulties.	0	0.0%	0	0.0%	0	0.0%	2	100.0%	0	0.0%	0	0.0%	2	0.1%
An unseen disability, e.g. diabetes, epilepsy, asthma.	5	20.8%	13	54.2%	0	0.0%	5	20.8%	0	0.0%	1	4.2%	24	0.7%
Autistic Spectrum Disorder.	0	0.0%	0	0.0%	0	0.0%	1	100.0%	0	0.0%	0	0.0%	1	0.0%
Multiple disabilities.	1	25.0%	2	50.0%	0	0.0%	0	0.0%	1	25.0%	0	0.0%	4	0.1%
A disability not listed above.	6	23.1%	14	53.8%	0	0.0%	6	23.1%	0	0.0%	0	0.0%	26	0.8%
Information not sought.	1	100.0%	0	0.0%	0	0.0%	0	0.0%	0	0.0%	0	0.0%	1	0.0%
Not known.	84	20.8%	215	53.2%	6	1.5%	82	20.3%	14	3.5%	3	0.7%	404	12.6%
<b>Totals</b>	<b>632</b>	<b>19.7%</b>	<b>1,764</b>	<b>55.1%</b>	<b>33</b>	<b>1.0%</b>	<b>649</b>	<b>20.3%</b>	<b>94</b>	<b>2.9%</b>	<b>31</b>	<b>1.0%</b>	<b>3,203</b>	<b>100.0%</b>





## Undergraduate Examination Results by Disability, Michaelmas Term 2005 Entrants

	Class I		Class II Division (1)		Class II Undivided		Class II Division (2)		Class III		Other Results		Total Candidates	
	No.	%	No.	%	No.	%	No.	%	No.	%	No.	%	No.	%
No disability.	579	23.6%	1,507	61.3%	1	0.0%	313	12.7%	39	1.6%	19	0.8%	2,458	82.9%
A specific learning difficulty e.g.dyslexia.	17	25.8%	35	53.0%	0	0.0%	9	13.6%	2	3.0%	3	4.5%	66	2.2%
Blind/are partially sighted.	0	0.0%	1	100.0%	0	0.0%	0	0.0%	0	0.0%	0	0.0%	1	0.0%
Deaf/have a hearing impairment.	3	37.5%	4	50.0%	0	0.0%	1	12.5%	0	0.0%	0	0.0%	8	0.3%
Wheelchair user/have mobility difficulties.	2	66.7%	1	33.3%	0	0.0%	0	0.0%	0	0.0%	0	0.0%	3	0.1%
Mental health difficulties.	0	0.0%	2	100.0%	0	0.0%	0	0.0%	0	0.0%	0	0.0%	2	0.1%
An unseen disability, e.g. diabetes, epilepsy, asthma.	5	31.3%	9	56.3%	0	0.0%	1	6.3%	1	6.3%	0	0.0%	16	0.5%
Autistic Spectrum Disorder.	3	50.0%	2	33.3%	0	0.0%	0	0.0%	0	0.0%	0	0.0%	6	0.2%
Multiple disabilities.	1	33.3%	1	33.3%	0	0.0%	1	33.3%	0	0.0%	0	0.0%	3	0.1%
A disability not listed above.	7	26.9%	15	57.7%	0	0.0%	4	15.4%	0	0.0%	0	0.0%	26	0.9%
Information not sought.	0	0.0%	3	100.0%	0	0.0%	0	0.0%	0	0.0%	0	0.0%	3	0.1%
Information refused.	3	50.0%	3	50.0%	0	0.0%	0	0.0%	0	0.0%	0	0.0%	6	0.2%
Not known.	73	19.8%	224	60.9%	0	0.0%	62	16.8%	8	2.2%	1	0.3%	368	12.4%
<b>Totals</b>	<b>693</b>	<b>23.4%</b>	<b>1,807</b>	<b>60.9%</b>	<b>1</b>	<b>0.0%</b>	<b>391</b>	<b>13.2%</b>	<b>51</b>	<b>1.7%</b>	<b>23</b>	<b>0.8%</b>	<b>2,966</b>	<b>100.0%</b>



## Undergraduate Examination Results by Disability, Michaelmas Term 2004 Entrants

	Class I		Class II Division (1)		Class II Undivided		Class II Division (2)		Class III		Other Results		Total Candidates	
	No.	%	No.	%	No.	%	No.	%	No.	%	No.	%	No.	%
No disability.	222	31.0%	377	52.7%	1	0.1%	102	14.3%	9	1.3%	4	0.6%	715	81.3%
A specific learning difficulty e.g. dyslexia.	2	11.8%	10	58.8%	0	0.0%	4	23.5%	1	5.9%	0	0.0%	17	1.9%
Blind/are partially sighted.	0	0.0%	1	50.0%	0	0.0%	0	0.0%	0	0.0%	1	50.0%	2	0.2%
Deaf/have a hearing impairment.	0	0.0%	1	100.0%	0	0.0%	0	0.0%	0	0.0%	0	0.0%	1	0.1%
Wheelchair user/have mobility difficulties.	0	0.0%	2	100.0%	0	0.0%	0	0.0%	0	0.0%	0	0.0%	2	0.2%
Mental health difficulties.	0	0.0%	0	0.0%	0	0.0%	0	0.0%	0	0.0%	1	100.0%	1	0.1%
An unseen disability, e.g. diabetes, epilepsy, asthma.	1	16.7%	3	50.0%	0	0.0%	1	16.7%	0	0.0%	1	16.7%	6	0.7%
Autistic Spectrum Disorder.	0	0.0%	1	50.0%	0	0.0%	0	0.0%	1	50.0%	0	0.0%	2	0.2%
A disability not listed above.	3	27.3%	7	63.6%	0	0.0%	1	9.1%	0	0.0%	0	0.0%	11	1.3%
Information not sought.	1	100.0%	0	0.0%	0	0.0%	0	0.0%	0	0.0%	0	0.0%	1	0.1%
Information refused.	1	50.0%	1	50.0%	0	0.0%	0	0.0%	0	0.0%	0	0.0%	2	0.2%
Not known.	28	23.5%	68	57.1%	0	0.0%	21	17.6%	2	1.7%	0	0.0%	119	13.5%
<b>Totals</b>	<b>258</b>	<b>29.4%</b>	<b>471</b>	<b>53.6%</b>	<b>1</b>	<b>0.1%</b>	<b>129</b>	<b>14.7%</b>	<b>13</b>	<b>1.5%</b>	<b>7</b>	<b>0.8%</b>	<b>879</b>	<b>100.0%</b>



## Final M.B. and Final Vet. M.B. Examination Results 2007-08

	Pass with Distinction				Pass				Others				Total			
	Men		Women		Men		Women		Men		Women		Men		Women	
	No.	%	No.	%	No.	%	No.	%	No.	%	No.	%	No.	%	No.	%
Final M.B. Examination Part I, Pathology	6	7.2%	11	13.6%	67	80.7%	68	84.0%	10	12.0%	2	2.5%	83	50.6%	81	49.4%
Final M.B. Examination Part II, Clinical examination	12	15.2%	15	18.1%	67	84.8%	68	81.9%	0	0.0%	0	0.0%	79	48.8%	83	51.2%
Final M.B. Examination Part II, Obstetrics and Gynaecology	0	0.0%	0	0.0%	75	98.7%	83	100.0%	1	1.3%	0	0.0%	76	47.8%	83	52.2%
Final Veterinary Examination, Part I	0	0.0%	5	10.9%	16	100.0%	41	89.1%	0	0.0%	0	0.0%	16	25.8%	46	74.2%
Final Veterinary Examination, Part II	4	21.1%	16	29.6%	15	78.9%	38	70.4%	0	0.0%	0	0.0%	19	26.0%	54	74.0%
Final Veterinary Examination, Part III	0	0.0%	0	0.0%	19	100.0%	39	100.0%	0	0.0%	0	0.0%	19	32.8%	39	67.2%
<b>Totals</b>	<b>22</b>	<b>7.5%</b>	<b>47</b>	<b>12.2%</b>	<b>259</b>	<b>88.7%</b>	<b>337</b>	<b>87.3%</b>	<b>11</b>	<b>3.8%</b>	<b>2</b>	<b>0.5%</b>	<b>292</b>	<b>43.1%</b>	<b>386</b>	<b>56.9%</b>



## Students deemed to have obtained honours whilst studying abroad, 2008

Chemical Engineering student at M.I.T.	3
Economics student at M.I.T.	2
Engineering student at M.I.T.	10
Law student at Paris II (Fourth year)	13
Manufacturing Engineering student at M.I.T.	2
Natural Sciences student at M.I.T.	8
<b>Totals</b>	<b>38</b>

This table gives the results for students who have spent the year studying at the Massachusetts Institute of Technology or studying in Paris as part of the Double Matrise.





## Tripos Examination Results by College, 2008

	Class I		Class II Division (1)		Class II Undivided		Class II Division (2)		Class III		Other Results		Total Candidates	
	No.	%	No.	%	No.	%	No.	%	No.	%	No.	%	No.	%
Christ's College	94	25.8%	168	46.0%	29	7.9%	56	15.3%	13	3.6%	5	1.4%	365	
Churchill College	122.5	28.1%	197.5	45.3%	31	7.1%	65	14.9%	14	3.2%	6	1.4%	436	
Clare College	90	22.3%	204	50.6%	37	9.2%	62	15.4%	4	1.0%	6	1.5%	403	
Clare Hall	1	100.0%	0	0.0%	0	0.0%	0	0.0%	0	0.0%	0	0.0%	1	
Corpus Christi College	57.5	24.9%	124.5	53.9%	13	5.6%	31	13.4%	4	1.7%	1	0.4%	231	
Darwin College	6	75.0%	1	12.5%	0	0.0%	0	0.0%	0	0.0%	1	12.5%	8	
Downing College	86	23.4%	182.5	49.7%	34	9.3%	50.5	13.8%	10	2.7%	4	1.1%	367	
Emmanuel College	121.5	29.8%	196	48.0%	26	6.4%	54.5	13.4%	7	1.7%	3	0.7%	408	
Fitzwilliam College	82.5	19.2%	212.5	49.5%	37	8.6%	82	19.1%	14	3.3%	1	0.2%	429	
Girton College	76	16.8%	247.5	54.8%	39	8.6%	74.5	16.5%	15	3.3%	0	0.0%	452	
Gonville and Caius College	129	28.1%	223	48.6%	35	7.6%	61	13.3%	10	2.2%	1	0.2%	459	
Homerton College	64	13.0%	269	54.7%	25	5.1%	111	22.6%	17	3.5%	6	1.2%	492	
Hughes Hall	15	23.1%	23	35.4%	2	3.1%	17	26.2%	5	7.7%	3	4.6%	65	
Jesus College	119.5	25.8%	231.5	49.9%	31	6.7%	73	15.7%	7	1.5%	2	0.4%	464	
King's College	84	23.6%	167.5	47.1%	27	7.6%	62.5	17.6%	13	3.7%	2	0.6%	356	
Lucy Cavendish College	4	8.3%	20	41.7%	2	4.2%	14	29.2%	6	12.5%	2	4.2%	48	
Magdalene College	76	24.2%	165	52.5%	25	8.0%	40	12.7%	6	1.9%	2	0.6%	314	
New Hall	43	13.7%	173.5	55.3%	32	10.2%	57.5	18.3%	7	2.2%	1	0.3%	314	
Newnham College	45.5	13.4%	188.5	55.6%	33	9.7%	64	18.9%	5	1.5%	3	0.9%	339	
Pembroke College	92.5	24.7%	187.5	50.0%	23	6.1%	55	14.7%	11	2.9%	6	1.6%	375	
Peterhouse	49.5	22.8%	109.5	50.5%	12	5.5%	31	14.3%	10	4.6%	5	2.3%	217	
Queens' College	103	22.3%	240	52.1%	33	7.2%	62	13.4%	16	3.5%	7	1.5%	461	
Robinson College	77.5	21.2%	185	50.7%	29	7.9%	62.5	17.1%	7	1.9%	4	1.1%	365	
Selwyn College	98	29.4%	171	51.4%	21	6.3%	35	10.5%	4	1.2%	4	1.2%	333	
Sidney Sussex College	66	21.6%	172.5	56.4%	21	6.9%	36	11.8%	8.5	2.8%	2	0.7%	306	
St Catharine's College	95	23.9%	209	52.5%	31	7.8%	49	12.3%	11	2.8%	3	0.8%	398	
St Edmund's College	12.5	12.5%	38	38.0%	4	4.0%	28.5	28.5%	13	13.0%	4	4.0%	100	
St John's College	106	20.7%	251	49.0%	41	8.0%	91	17.8%	18	3.5%	5	1.0%	512	
Trinity College	204	32.6%	304	48.6%	20	3.2%	81	13.0%	14	2.2%	2	0.3%	625	
Trinity Hall	67.5	20.3%	191.5	57.5%	26	7.8%	43	12.9%	5	1.5%	0	0.0%	333	
Wolfson College	10	23.3%	19	44.2%	1	2.3%	11	25.6%	2	4.7%	0	0.0%	43	
<b>Totals</b>	<b>2,298.5</b>	<b>22.9%</b>	<b>5,072.5</b>	<b>50.6%</b>	<b>720</b>	<b>7.2%</b>	<b>1,560.5</b>	<b>15.6%</b>	<b>276.5</b>	<b>2.8%</b>	<b>91</b>	<b>0.9%</b>	<b>10,019</b>	



## Men's and Women's Tripos Examination Results by College, 2008

	Class I:				Class II (1):				Class II (2):				Class III:				Others:				Total:							
	Men		Women		Men		Women		Men		Women		Men		Women		Men		Women		Men		Women					
	No.	%	No.	%	No.	%	No.	%	No.	%	No.	%	No.	%	No.	%	No.	%	No.	%	No.	%	No.	%				
Christ's College	66	28.7%	28	20.7%	96	41.7%	72	53.3%	16	7.0%	13	9.6%	38	16.5%	18	13.3%	10	4.3%	3	2.2%	4	1.7%	1	0.7%	230	63.0%	135	37.0%
Churchill College	92	31.0%	30.5	21.9%	127	42.8%	70.5	50.7%	17	5.7%	14	10.1%	47	15.8%	18	12.9%	11	3.7%	3	2.2%	3	1.0%	3	2.2%	297	68.1%	139	31.9%
Clare College	48.5	23.3%	41.5	21.3%	103.5	49.8%	100.5	51.5%	13	6.3%	24	12.3%	38	18.3%	24	12.3%	4	1.9%	0	0.0%	1	0.5%	5	2.6%	208	51.6%	195	48.4%
Clare Hall	1	100.0%	0	0.0%	0	0.0%	0	0.0%	0	0.0%	0	0.0%	0	0.0%	0	0.0%	0	0.0%	0	0.0%	0	0.0%	0	0.0%	1	100.0%	0	0.0%
Corpus Christi College	30	24.4%	27.5	25.5%	63	51.2%	61.5	56.9%	5	4.1%	8	7.4%	21	17.1%	10	9.3%	3	2.4%	1	0.9%	1	0.8%	0	0.0%	123	53.2%	108	46.8%
Darwin College	5	71.4%	1	100.0%	1	14.3%	0	0.0%	0	0.0%	0	0.0%	0	0.0%	0	0.0%	0	0.0%	0	0.0%	0	0.0%	0	0.0%	7	87.5%	1	12.5%
Downing College	46	22.3%	40	24.1%	98.5	49.0%	84	50.6%	14	7.0%	20	12.0%	30.5	15.2%	20	12.0%	8	4.0%	2	1.2%	4	2.0%	0	0.0%	201	54.8%	166	45.2%
Emmanuel College	69	32.3%	52.5	26.6%	89	42.2%	107	54.3%	15	7.1%	11	5.6%	30	14.2%	24.5	12.4%	5	2.4%	2	1.0%	3	1.4%	0	0.0%	211	51.7%	197	48.3%
Fitzwilliam College	62.5	22.8%	20	12.9%	120.5	44.0%	92	59.4%	23	8.4%	14	9.0%	55	20.1%	27	17.4%	12	4.4%	2	1.3%	1	0.4%	0	0.0%	274	63.9%	155	36.1%
Gonville	49	20.1%	27	13.0%	121	49.6%	126.5	60.8%	22	9.0%	17	8.2%	44	18.0%	30.5	14.7%	8	3.3%	7	3.4%	0	0.0%	0	0.0%	244	54.0%	208	46.0%
Gonville and Caius College	83	30.6%	46	24.5%	129	47.6%	94	50.0%	12	4.4%	23	12.2%	39	14.4%	22	11.7%	7	2.6%	3	1.6%	1	0.4%	0	0.0%	271	59.0%	188	41.0%
Homerton College	37	15.7%	27	10.5%	101	43.0%	168	65.4%	15	6.4%	10	3.9%	66	28.1%	45	17.5%	11	4.7%	6	2.3%	5	2.1%	1	0.4%	235	47.8%	257	52.2%
Hughes Hall	11	26.8%	4	16.7%	10	24.4%	13	54.2%	2	4.9%	0	0.0%	13	31.7%	4	16.7%	4	7.3%	2	8.3%	2	4.9%	1	4.2%	41	63.1%	24	36.9%
Jesus College	78	29.1%	41.5	21.2%	119	44.4%	112.5	57.4%	18	6.7%	13	6.6%	46	17.2%	27	13.8%	5	1.9%	2	1.0%	2	0.7%	0	0.0%	268	57.8%	196	42.2%
King's College	52	26.4%	32	20.1%	84	42.6%	83.5	52.5%	13	6.6%	14	8.8%	38	19.3%	24.5	15.4%	9	4.6%	4	2.5%	1	0.5%	1	0.6%	197	55.3%	159	44.7%
Lucy Cavendish College	0	0.0%	4	8.3%	0	0.0%	20	41.7%	0	0.0%	2	4.2%	0	0.0%	14	29.2%	0	0.0%	6	12.5%	0	0.0%	2	4.2%	0	0.0%	48	100.0%
Magdalene College	42	26.3%	34	22.1%	83	51.9%	82	53.2%	10	6.3%	15	9.7%	21	13.1%	19	12.3%	3	1.9%	3	1.9%	1	0.6%	1	0.6%	160	51.0%	154	49.0%
New Hall	0	0.0%	43	13.7%	0	0.0%	173.5	55.3%	0	0.0%	32	10.2%	0	0.0%	57.5	18.3%	0	0.0%	7	2.2%	0	0.0%	1	0.3%	0	0.0%	314	100.0%
Newnham College	0	0.0%	45.5	13.4%	0	0.0%	188.5	55.6%	0	0.0%	33	9.7%	0	0.0%	64	18.9%	0	0.0%	5	1.5%	0	0.0%	3	0.9%	0	0.0%	339	100.0%
Pembroke College	53	28.6%	39.5	20.8%	79	42.7%	108.5	57.1%	10	5.4%	13	6.8%	35	18.9%	20	10.5%	5	2.7%	6	3.2%	3	1.6%	3	1.6%	185	49.3%	190	50.7%
Peterhouse	36	29.3%	13.5	14.4%	59	48.0%	50.5	53.7%	4	3.3%	8	8.5%	15	12.2%	16	17.0%	5	4.1%	5	5.3%	4	3.3%	4	1.1%	123	56.7%	94	43.3%
Queens' College	74	27.2%	29	15.3%	123	45.2%	117	61.9%	15	5.5%	18	9.5%	43	15.8%	19	10.1%	12	4.4%	4	2.1%	5	1.8%	2	1.1%	272	59.0%	189	41.0%
Robinson College	51	22.7%	26.5	18.9%	116.5	51.8%	68.5	48.9%	15	6.7%	14	10.0%	37.5	16.7%	25	17.9%	4	1.8%	3	2.1%	1	0.4%	3	2.1%	225	61.6%	140	38.4%
Selwyn College	60	32.6%	38	25.5%	86	46.7%	85	57.0%	12	6.5%	9	6.0%	23	12.5%	12	8.1%	1	0.5%	3	2.0%	2	1.1%	2	1.3%	184	55.3%	149	44.7%
Sidney Sussex College	35	23.3%	31	19.9%	79.5	53.0%	93	59.6%	9	6.0%	12	7.7%	21	14.0%	15	9.6%	5.5	3.7%	3	1.9%	0	0.0%	2	1.3%	150	49.0%	156	51.0%
St Catharine's College	57	26.0%	38	21.2%	106	48.4%	103	57.5%	17	7.8%	14	7.8%	30	13.7%	19	10.6%	7	3.2%	4	2.2%	2	0.9%	1	0.6%	219	55.0%	179	45.0%
St Edmund's College	11	16.7%	1.5	4.4%	28	42.4%	10	29.4%	2	3.0%	2	5.9%	16	24.2%	12.5	36.8%	8	12.1%	5	14.7%	1	1.5%	3	8.8%	66	66.0%	34	34.0%
St John's College	77	23.8%	29	15.4%	152	46.9%	99	52.7%	24	7.4%	17	9.0%	56	17.3%	35	18.6%	11	3.4%	7	3.7%	4	1.2%	1	0.5%	324	63.3%	188	36.7%
Trinity College	167.5	40.2%	36.5	17.5%	175.5	42.1%	128.5	61.8%	13	3.1%	7	3.4%	48	11.5%	33	15.9%	11	2.6%	3	1.4%	2	0.5%	0	0.0%	417	66.7%	208	33.3%
Trinity Hall	35.5	21.0%	32	19.5%	95	56.2%	96.5	58.8%	13	7.7%	13	7.9%	23.5	13.9%	19.5	11.9%	2	1.2%	3	1.8%	0	0.0%	0	0.0%	169	50.8%	164	49.2%
Wolfson College	9	32.1%	1	6.7%	12	42.9%	7	46.7%	0	0.0%	1	6.7%	5	17.9%	6	40.0%	2	7.1%	0	0.0%	0	0.0%	0	0.0%	28	65.1%	15	34.9%
<b>Totals</b>	<b>1,438</b>	<b>27.0%</b>	<b>860.5</b>	<b>18.4%</b>	<b>2,457</b>	<b>46.1%</b>	<b>2,616</b>	<b>55.8%</b>	<b>329</b>	<b>6.2%</b>	<b>391</b>	<b>8.3%</b>	<b>879.5</b>	<b>16.5%</b>	<b>681</b>	<b>14.5%</b>	<b>172.5</b>	<b>3.2%</b>	<b>104</b>	<b>2.2%</b>	<b>54</b>	<b>1.0%</b>	<b>37</b>	<b>0.8%</b>	<b>5,330</b>	<b>53.2%</b>	<b>4,689</b>	<b>46.8%</b>



## Preliminary and Other Examination Results by College, 2008

	Class I		Class II Division (1)		Class II Undivided		Class II Division (2)		Class III		Other Results		Total Candidates		
	No.	%	No.	%	No.	%	No.	%	No.	%	No.	%	No.	No.	
Christ's College	0	0.0%	1	100.0%	0	0.0%	0	0.0%	0	0.0%	0	0.0%	0	0.0%	1
Churchill College	2	50.0%	2	50.0%	0	0.0%	0	0.0%	0	0.0%	0	0.0%	0	0.0%	4
Clare College	1	20.0%	3	60.0%	1	20.0%	0	0.0%	0	0.0%	0	0.0%	0	0.0%	5
Clare Hall	0	0.0%	2	66.7%	0	0.0%	1	33.3%	0	0.0%	0	0.0%	0	0.0%	3
Corpus Christi College	0	0.0%	8	100.0%	0	0.0%	0	0.0%	0	0.0%	0	0.0%	0	0.0%	8
Darwin College	2	13.3%	9	60.0%	0	0.0%	2	13.3%	1	6.7%	1	6.7%	1	6.7%	15
Downing College	2	33.3%	4	66.7%	0	0.0%	0	0.0%	0	0.0%	0	0.0%	0	0.0%	6
Emmanuel College	2	100.0%	0	0.0%	0	0.0%	0	0.0%	0	0.0%	0	0.0%	0	0.0%	2
Fitzwilliam College	0	0.0%	2	50.0%	1	25.0%	1	25.0%	0	0.0%	0	0.0%	0	0.0%	4
Girton College	3	50.0%	2	33.3%	0	0.0%	1	16.7%	0	0.0%	0	0.0%	0	0.0%	6
Gonville and Caius College	3	42.9%	2	28.6%	0	0.0%	1	14.3%	1	14.3%	0	0.0%	0	0.0%	7
Homerton College	0	0.0%	5	62.5%	0	0.0%	2	25.0%	0	0.0%	1	12.5%	1	12.5%	8
Hughes Hall	0	0.0%	8	88.9%	0	0.0%	1	11.1%	0	0.0%	0	0.0%	0	0.0%	9
Jesus College	5	45.5%	6	54.5%	0	0.0%	0	0.0%	0	0.0%	0	0.0%	0	0.0%	11
King's College	1	16.7%	3	50.0%	0	0.0%	1	16.7%	1	16.7%	0	0.0%	0	0.0%	6
Lucy Cavendish College	1	16.7%	2	33.3%	1	16.7%	2	33.3%	0	0.0%	0	0.0%	0	0.0%	6
Magdalene College	0	0.0%	2	100.0%	0	0.0%	0	0.0%	0	0.0%	0	0.0%	0	0.0%	2
New Hall	0	0.0%	1	50.0%	0	0.0%	1	50.0%	0	0.0%	0	0.0%	0	0.0%	2
Newnham College	1	100.0%	0	0.0%	0	0.0%	0	0.0%	0	0.0%	0	0.0%	0	0.0%	1
Pembroke College	3	42.9%	3	42.9%	0	0.0%	1	14.3%	0	0.0%	0	0.0%	0	0.0%	7
Peterhouse	1	14.3%	5	71.4%	0	0.0%	0	0.0%	1	14.3%	0	0.0%	0	0.0%	7
Queens' College	1	12.5%	7	87.5%	0	0.0%	0	0.0%	0	0.0%	0	0.0%	0	0.0%	8
Robinson College	1	20.0%	2	40.0%	2	40.0%	0	0.0%	0	0.0%	0	0.0%	0	0.0%	5
Selwyn College	1	16.7%	3	50.0%	2	33.3%	0	0.0%	0	0.0%	0	0.0%	0	0.0%	6
Sidney Sussex College	3	18.8%	11	68.8%	2	12.5%	0	0.0%	0	0.0%	0	0.0%	0	0.0%	16
St Catharine's College	2	33.3%	3	50.0%	0	0.0%	1	16.7%	0	0.0%	0	0.0%	0	0.0%	6
St Edmund's College	0	0.0%	2	33.3%	0	0.0%	1	16.7%	3	50.0%	0	0.0%	0	0.0%	6
St John's College	1	11.1%	6	66.7%	0	0.0%	2	22.2%	0	0.0%	0	0.0%	0	0.0%	9
Trinity College	1	14.3%	5	71.4%	0	0.0%	1	14.3%	0	0.0%	0	0.0%	0	0.0%	7
Trinity Hall	2	22.2%	6	66.7%	1	11.1%	0	0.0%	0	0.0%	0	0.0%	0	0.0%	9
Wolfson College	2	9.5%	12	57.1%	3	14.3%	4	19.0%	0	0.0%	0	0.0%	0	0.0%	21
<b>Totals</b>	<b>41</b>	<b>19.2%</b>	<b>127</b>	<b>59.6%</b>	<b>13</b>	<b>6.1%</b>	<b>23</b>	<b>10.8%</b>	<b>7</b>	<b>3.3%</b>	<b>2</b>	<b>0.9%</b>	<b>2</b>	<b>0.9%</b>	<b>213</b>

This table excludes unclassified Preliminary Examinations in Classics, Education Studies, History, Linguistics, and the First Examination in Theology for Ministry (see Table 9a).



## Men's and Women's Preliminary and Other Examination Results by College, 2008

	Class I:				Class II (1):				Class II:				Class II (2):				Class III:				Others:				Total:			
	Men		Women		Men		Women		Men		Women		Men		Women		Men		Women		Men		Women		Men		Women	
	No.	%	No.	%	No.	%	No.	%	No.	%	No.	%	No.	%	No.	%	No.	%	No.	%	No.	%	No.	%	No.	%	No.	%
Christ's College	0	0.0%	0	0.0%	0	0.0%	0	0.0%	0	0.0%	0	0.0%	0	0.0%	0	0.0%	0	0.0%	0	0.0%	0	0.0%	1	100.0%	0	0.0%	0	0.0%
Churchill College	1	33.3%	1	100.0%	0	0.0%	0	0.0%	0	0.0%	0	0.0%	0	0.0%	0	0.0%	0	0.0%	0	0.0%	0	0.0%	0	0.0%	3	75.0%	1	25.0%
Clare College	0	0.0%	1	100.0%	2	50.0%	0	0.0%	0	0.0%	0	0.0%	0	0.0%	0	0.0%	0	0.0%	0	0.0%	0	0.0%	0	0.0%	1	20.0%	4	80.0%
Clare Hall	0	0.0%	0	0.0%	2	66.7%	0	0.0%	0	0.0%	0	0.0%	0	0.0%	0	0.0%	0	0.0%	0	0.0%	0	0.0%	0	0.0%	0	0.0%	0	0.0%
Corpus Christi College	0	0.0%	0	0.0%	5	100.0%	3	100.0%	0	0.0%	0	0.0%	0	0.0%	0	0.0%	0	0.0%	0	0.0%	0	0.0%	0	0.0%	5	62.5%	3	37.5%
Darwin College	1	12.5%	1	14.3%	3	37.5%	6	85.7%	0	0.0%	2	25.0%	0	0.0%	1	12.5%	0	0.0%	1	12.5%	0	0.0%	8	53.3%	7	46.7%		
Downing College	2	50.0%	0	0.0%	2	50.0%	2	100.0%	0	0.0%	0	0.0%	0	0.0%	0	0.0%	0	0.0%	0	0.0%	0	0.0%	0	0.0%	4	66.7%	2	33.3%
Emmanuel College	1	100.0%	1	100.0%	0	0.0%	0	0.0%	0	0.0%	0	0.0%	0	0.0%	0	0.0%	0	0.0%	0	0.0%	0	0.0%	0	0.0%	1	50.0%	1	50.0%
Fitzwilliam College	0	0.0%	0	0.0%	1	50.0%	1	50.0%	0	0.0%	0	0.0%	0	0.0%	0	0.0%	0	0.0%	0	0.0%	0	0.0%	0	0.0%	2	50.0%	2	50.0%
Gilton College	1	100.0%	2	40.0%	2	40.0%	0	0.0%	0	0.0%	0	0.0%	0	0.0%	0	0.0%	0	0.0%	0	0.0%	0	0.0%	0	0.0%	1	16.7%	5	83.3%
Gonville and Caius College	2	40.0%	1	50.0%	0	0.0%	0	0.0%	0	0.0%	0	0.0%	1	20.0%	0	0.0%	0	0.0%	0	0.0%	0	0.0%	0	0.0%	5	71.4%	2	28.6%
Homerton College	0	0.0%	0	0.0%	3	75.0%	2	50.0%	0	0.0%	0	0.0%	1	25.0%	0	0.0%	0	0.0%	0	0.0%	0	0.0%	0	0.0%	4	50.0%	4	50.0%
Hughes Hall	0	0.0%	0	0.0%	4	80.0%	4	100.0%	0	0.0%	0	0.0%	0	0.0%	0	0.0%	0	0.0%	0	0.0%	0	0.0%	0	0.0%	5	55.6%	4	44.4%
Jesus College	2	40.0%	3	50.0%	3	60.0%	3	50.0%	0	0.0%	0	0.0%	0	0.0%	0	0.0%	0	0.0%	0	0.0%	0	0.0%	0	0.0%	5	45.5%	6	54.5%
King's College	1	25.0%	0	0.0%	2	50.0%	1	50.0%	0	0.0%	0	0.0%	0	0.0%	0	0.0%	1	25.0%	0	0.0%	0	0.0%	0	0.0%	4	66.7%	2	33.3%
Lucy Cavendish College	0	0.0%	1	16.7%	0	0.0%	2	33.3%	0	0.0%	1	16.7%	0	0.0%	0	0.0%	0	0.0%	0	0.0%	0	0.0%	0	0.0%	0	0.0%	6	100.0%
Magdalene College	0	0.0%	0	0.0%	0	0.0%	2	100.0%	0	0.0%	0	0.0%	0	0.0%	0	0.0%	0	0.0%	0	0.0%	0	0.0%	0	0.0%	0	0.0%	2	100.0%
New Hall	0	0.0%	0	0.0%	0	0.0%	1	50.0%	0	0.0%	0	0.0%	0	0.0%	0	0.0%	0	0.0%	0	0.0%	0	0.0%	0	0.0%	0	0.0%	2	100.0%
Newnham College	0	0.0%	1	100.0%	0	0.0%	0	0.0%	0	0.0%	0	0.0%	0	0.0%	0	0.0%	0	0.0%	0	0.0%	0	0.0%	0	0.0%	0	0.0%	1	100.0%
Pembroke College	3	60.0%	0	0.0%	2	40.0%	1	50.0%	0	0.0%	0	0.0%	0	0.0%	0	0.0%	0	0.0%	0	0.0%	0	0.0%	0	0.0%	5	71.4%	2	28.6%
Peterhouse	0	0.0%	1	25.0%	3	100.0%	2	50.0%	0	0.0%	0	0.0%	0	0.0%	0	0.0%	1	25.0%	0	0.0%	0	0.0%	0	0.0%	3	42.9%	4	57.1%
Queens' College	1	16.7%	0	0.0%	5	83.3%	2	100.0%	0	0.0%	0	0.0%	0	0.0%	0	0.0%	0	0.0%	0	0.0%	0	0.0%	0	0.0%	6	75.0%	2	25.0%
Robinson College	0	0.0%	1	50.0%	2	66.7%	0	0.0%	1	33.3%	1	50.0%	0	0.0%	0	0.0%	0	0.0%	0	0.0%	0	0.0%	0	0.0%	3	60.0%	2	40.0%
Selwyn College	1	25.0%	0	0.0%	2	50.0%	1	50.0%	1	25.0%	1	50.0%	0	0.0%	0	0.0%	0	0.0%	0	0.0%	0	0.0%	0	0.0%	4	66.7%	2	33.3%
Sidney Sussex College	1	11.1%	2	28.6%	6	66.7%	5	71.4%	2	22.2%	0	0.0%	0	0.0%	0	0.0%	0	0.0%	0	0.0%	0	0.0%	0	0.0%	9	56.3%	7	43.8%
St Catharine's College	1	33.3%	1	33.3%	2	66.7%	0	0.0%	0	0.0%	1	33.3%	0	0.0%	0	0.0%	0	0.0%	0	0.0%	0	0.0%	0	0.0%	3	50.0%	3	50.0%
St Edmund's College	0	0.0%	0	0.0%	2	40.0%	0	0.0%	0	0.0%	0	0.0%	1	100.0%	3	60.0%	0	0.0%	0	0.0%	0	0.0%	0	0.0%	5	83.3%	1	16.7%
St John's College	1	14.3%	0	0.0%	4	57.1%	2	100.0%	0	0.0%	0	0.0%	0	0.0%	0	0.0%	0	0.0%	0	0.0%	0	0.0%	0	0.0%	7	77.8%	2	22.2%
Trinity College	1	25.0%	0	0.0%	3	75.0%	2	66.7%	0	0.0%	0	0.0%	1	33.3%	0	0.0%	0	0.0%	0	0.0%	0	0.0%	0	0.0%	4	57.1%	3	42.9%
Trinity Hall	0	0.0%	2	66.7%	6	100.0%	0	0.0%	0	0.0%	1	33.3%	0	0.0%	0	0.0%	0	0.0%	0	0.0%	0	0.0%	0	0.0%	6	66.7%	3	33.3%
Wolfson College	2	13.3%	0	0.0%	9	60.0%	3	50.0%	2	13.3%	2	16.7%	1	16.7%	2	13.3%	0	0.0%	0	0.0%	0	0.0%	0	0.0%	15	71.4%	6	28.6%
<b>Totals</b>	<b>22</b>	<b>18.5%</b>	<b>19</b>	<b>20.2%</b>	<b>74</b>	<b>62.2%</b>	<b>53</b>	<b>56.4%</b>	<b>7</b>	<b>5.9%</b>	<b>6</b>	<b>6.4%</b>	<b>10</b>	<b>8.4%</b>	<b>13</b>	<b>13.8%</b>	<b>5</b>	<b>4.2%</b>	<b>2</b>	<b>2.1%</b>	<b>1</b>	<b>0.8%</b>	<b>1</b>	<b>1.1%</b>	<b>119</b>	<b>55.9%</b>	<b>94</b>	<b>44.1%</b>

This table excludes unclassified Preliminary Examinations in Classics, Education Studies, History, Linguistics, and the First Examination in Theology for Ministry (see Table 9a).





## Results in All Examinations by College, 2008

	Class I		Class II Division (1)		Class II Undivided		Class II Division (2)		Class III		Other Results		Total Candidates	
	No.	%	No.	%	No.	%	No.	%	No.	%	No.	%	No.	No.
Christ's College	94	25.7%	169	46.2%	29	7.9%	56	15.3%	13	3.6%	5	1.4%	366	
Churchill College	124.5	28.3%	199.5	45.3%	31	7.0%	65	14.8%	14	3.2%	6	1.4%	440	
Clare College	91	22.3%	207	50.7%	38	9.3%	62	15.2%	4	1.0%	6	1.5%	408	
Clare Hall	1	25.0%	2	50.0%	0	0.0%	1	25.0%	0	0.0%	0	0.0%	4	
Corpus Christi College	57.5	24.1%	132.5	55.4%	13	5.4%	31	13.0%	4	1.7%	1	0.4%	239	
Darwin College	8	34.8%	10	43.5%	0	0.0%	2	8.7%	1	4.3%	2	8.7%	23	
Downing College	88	23.6%	186.5	50.0%	34	9.1%	50.5	13.5%	10	2.7%	4	1.1%	373	
Emmanuel College	123.5	30.1%	196	47.8%	26	6.3%	54.5	13.3%	7	1.7%	3	0.7%	410	
Fitzwilliam College	82.5	19.1%	214.5	49.5%	38	8.8%	83	19.2%	14	3.2%	1	0.2%	433	
Girton College	79	17.2%	249.5	54.5%	39	8.5%	75.5	16.5%	15	3.3%	0	0.0%	458	
Gonville and Caius College	132	28.3%	225	48.3%	35	7.5%	62	13.3%	11	2.4%	1	0.2%	466	
Homerton College	64	12.8%	274	54.8%	25	5.0%	113	22.6%	17	3.4%	7	1.4%	500	
Hughes Hall	15	20.3%	31	41.9%	2	2.7%	18	24.3%	5	6.8%	3	4.1%	74	
Jesus College	124.5	26.2%	237.5	50.0%	31	6.5%	73	15.4%	7	1.5%	2	0.4%	475	
King's College	85	23.5%	170.5	47.1%	27	7.5%	63.5	17.5%	14	3.9%	2	0.6%	362	
Lucy Cavendish College	5	9.3%	22	40.7%	3	5.6%	16	29.6%	6	11.1%	2	3.7%	54	
Magdalene College	76	24.1%	167	52.8%	25	7.9%	40	12.7%	6	1.9%	2	0.6%	316	
New Hall	43	13.6%	174.5	55.2%	32	10.1%	58.5	18.5%	7	2.2%	1	0.3%	316	
Newnham College	46.5	13.7%	188.5	55.4%	33	9.7%	64	18.8%	5	1.5%	3	0.9%	340	
Pembroke College	95.5	25.0%	190.5	49.9%	23	6.0%	56	14.7%	11	2.9%	6	1.6%	382	
Peterhouse	50.5	22.5%	114.5	51.1%	12	5.4%	31	13.8%	11	4.9%	5	2.2%	224	
Queens' College	104	22.2%	247	52.7%	33	7.0%	62	13.2%	16	3.4%	7	1.5%	469	
Robinson College	78.5	21.2%	187	50.5%	31	8.4%	62.5	16.9%	7	1.9%	4	1.1%	370	
Selwyn College	99	29.2%	174	51.3%	23	6.8%	35	10.3%	4	1.2%	4	1.2%	339	
Sidney Sussex College	69	21.4%	183.5	57.0%	23	7.1%	36	11.2%	8.5	2.6%	2	0.6%	322	
St Catharine's College	97	24.0%	212	52.5%	31	7.7%	50	12.4%	11	2.7%	3	0.7%	404	
St Edmund's College	12.5	11.8%	40	37.7%	4	3.8%	29.5	27.8%	16	15.1%	4	3.8%	106	
St John's College	107	20.5%	257	49.3%	41	7.9%	93	17.9%	18	3.5%	5	1.0%	521	
Trinity College	205	32.4%	309	48.9%	20	3.2%	82	13.0%	14	2.2%	2	0.3%	632	
Trinity Hall	69.5	20.3%	197.5	57.7%	27	7.9%	43	12.6%	5	1.5%	0	0.0%	342	
Wolfson College	12	18.8%	31	48.4%	4	6.3%	15	23.4%	2	3.1%	0	0.0%	64	
<b>Totals</b>	<b>2,340</b>	<b>22.9%</b>	<b>5,200</b>	<b>50.8%</b>	<b>733</b>	<b>7.2%</b>	<b>1,584</b>	<b>15.5%</b>	<b>283.5</b>	<b>2.8%</b>	<b>93</b>	<b>0.9%</b>	<b>10,232</b>	

This table excludes unclassified Preliminary Examinations in Classics, Education Studies, History, Linguistics, and the First Examination in Theology for Ministry (see Table 9a).



## Men's and Women's Results in All Examinations by College, 2008

	Class I:						Class II (1):						Class II (2):						Class III:						Others:						Total:			
	Men			Women			Men			Women			Men			Women			Men			Women			Men			Women			Men		Women	
	No.	%		No.	%		No.	%		No.	%		No.	%		No.	%		No.	%		No.	%		No.	%		No.	%	No.	%			
Christ's College	66	28.6%	28	20.7%	97	42.0%	72	53.3%	16	6.9%	13	9.6%	18	13.3%	10	4.3%	3	2.2%	4	1.7%	1	0.7%	1	0.7%	231	63.1%	135	36.9%						
Churchill College	93	31.0%	31.5	22.5%	129	43.0%	70.5	50.4%	17	5.7%	14	10.0%	18	12.9%	11	3.7%	3	2.1%	3	1.0%	3	2.1%	300	68.2%	140	31.8%								
Clare College	48.5	32.2%	42.5	21.4%	104.5	50.0%	102.5	51.5%	13	6.2%	25	12.6%	38	18.2%	24	12.1%	4	1.9%	0	0.0%	0	0.0%	209	51.2%	199	48.8%								
Clare Hall	1	100.0%	0	0.0%	0	0.0%	2	66.7%	0	0.0%	0	0.0%	1	33.3%	0	0.0%	0	0.0%	0	0.0%	0	0.0%	1	25.0%	3	75.0%								
Copus Christi College	30	23.4%	27.5	24.8%	68	53.1%	64.5	58.1%	5	3.9%	8	7.2%	21	16.4%	10	9.0%	3	2.3%	1	0.8%	0	0.0%	128	53.6%	111	46.4%								
Darwin College	6	40.0%	2	25.0%	4	26.7%	6	75.0%	0	0.0%	0	0.0%	2	13.3%	0	0.0%	0	0.0%	0	0.0%	0	0.0%	15	65.2%	8	34.8%								
Downing College	48	23.4%	40	23.8%	100.5	49.0%	86	51.2%	14	6.8%	20	11.9%	30.5	14.9%	20	11.9%	8	3.9%	2	1.2%	4	2.0%	205	55.0%	168	45.0%								
Emmanuel College	70	33.0%	53.5	27.0%	89	42.0%	107	54.0%	15	7.1%	11	5.6%	30	14.2%	24.5	12.4%	5	2.4%	2	1.0%	3	1.4%	212	51.7%	198	48.3%								
Fitzwilliam College	62.5	22.6%	20	12.7%	121.5	44.0%	93	59.2%	24	8.7%	14	8.9%	55	19.9%	28	17.8%	12	4.3%	2	1.3%	1	0.4%	276	63.7%	157	36.3%								
Gitton College	50	20.4%	29	13.6%	121	49.4%	128.5	60.3%	22	9.0%	17	8.0%	44	18.0%	31.5	14.8%	8	3.3%	7	3.3%	0	0.0%	245	53.5%	213	46.5%								
Gonville and Caius College	85	30.8%	47	24.7%	131	47.5%	94	49.5%	12	4.3%	23	12.1%	40	14.5%	22	11.6%	7	2.5%	4	2.1%	1	0.4%	276	59.2%	190	40.8%								
Homerton College	37	15.5%	27	10.3%	104	43.5%	170	65.1%	15	6.3%	10	3.8%	67	28.0%	46	17.6%	11	4.6%	6	2.3%	5	2.1%	239	47.8%	261	52.2%								
Hughes Hall	11	23.9%	4	14.3%	14	30.4%	17	60.7%	2	4.3%	0	0.0%	14	30.4%	4	14.3%	3	6.5%	2	7.1%	2	4.3%	46	62.2%	28	37.8%								
Jesus College	80	29.3%	44.5	22.0%	122	44.7%	115.5	57.2%	18	6.6%	13	6.4%	46	16.8%	27	13.4%	5	1.8%	2	1.0%	2	0.7%	273	57.5%	202	42.5%								
King's College	53	26.4%	32	19.9%	86	42.8%	84.5	52.5%	13	6.5%	14	8.7%	38	18.9%	25.5	15.8%	10	5.0%	4	2.5%	1	0.5%	201	55.5%	161	44.5%								
Lucy Cavendish College	0	0.0%	5	9.3%	0	0.0%	22	40.7%	0	0.0%	3	5.6%	0	0.0%	16	29.6%	0	0.0%	6	11.1%	0	0.0%	2	3.7%	0	0.0%	54	100.0%						
Magdalene College	42	26.3%	34	21.8%	83	51.9%	84	53.8%	10	6.3%	15	9.6%	21	13.1%	19	12.2%	3	1.9%	3	1.9%	1	0.6%	160	50.6%	156	49.4%								
New Hall	0	0.0%	43	13.6%	0	0.0%	174.5	55.2%	0	0.0%	32	10.1%	0	0.0%	58.5	18.5%	0	0.0%	7	2.2%	0	0.0%	3	0.9%	0	0.0%	316	100.0%						
Newnham College	0	0.0%	46.5	13.7%	0	0.0%	188.5	55.4%	0	0.0%	33	9.7%	0	0.0%	64	18.8%	0	0.0%	5	1.5%	0	0.0%	3	0.9%	0	0.0%	340	100.0%						
Pembroke College	56	29.5%	39.5	20.6%	81	42.6%	109.5	57.0%	10	5.3%	13	6.8%	35	18.4%	21	10.9%	5	2.6%	6	3.1%	3	1.6%	190	49.7%	192	50.3%								
Peterhouse	36	28.6%	14.5	14.8%	62	49.2%	52.5	53.6%	4	3.2%	8	8.2%	15	11.9%	16	16.3%	5	4.0%	6	6.1%	4	3.2%	126	56.3%	98	43.8%								
Queens' College	75	27.0%	29	15.2%	128	46.0%	119	62.3%	15	5.4%	18	9.4%	43	15.5%	19	9.9%	12	4.3%	4	2.1%	5	1.8%	278	59.3%	191	40.7%								
Robinson College	51	22.4%	27.5	19.4%	118.5	52.0%	68.5	48.2%	16	7.0%	15	10.6%	37.5	16.4%	25	17.6%	4	1.8%	3	2.1%	1	0.4%	228	61.6%	142	38.4%								
Selwyn College	61	32.4%	38	25.2%	88	46.8%	86	57.0%	13	6.9%	10	6.6%	23	12.2%	12	7.9%	4	2.8%	2	1.1%	2	1.3%	188	55.5%	151	44.5%								
Sidney Sussex College	36	22.6%	33	20.2%	85.5	53.8%	98	60.1%	11	6.9%	12	7.4%	21	13.2%	15	9.2%	5.5	3.5%	3	1.8%	0	0.0%	159	49.4%	163	50.6%								
St Catharine's College	58	26.1%	39	21.4%	107	48.2%	105	57.7%	17	7.7%	14	7.7%	31	14.0%	19	10.4%	7	3.2%	4	2.2%	2	0.9%	222	55.0%	182	45.0%								
St Edmund's College	11	15.5%	1.5	4.3%	30	42.3%	10	28.6%	2	2.8%	2	5.7%	16	22.5%	13.5	38.6%	11	15.5%	5	14.3%	1	1.4%	71	67.0%	35	33.0%								
St John's College	78	23.6%	29	15.3%	156	47.1%	101	53.2%	24	7.3%	17	8.9%	58	17.5%	35	18.4%	11	3.3%	7	3.7%	4	1.2%	331	63.5%	190	36.5%								
Trinity College	168.5	40.0%	36.5	17.3%	178.5	42.4%	130.5	61.8%	13	3.1%	7	3.3%	48	11.4%	34	16.1%	11	2.6%	3	1.4%	2	0.5%	421	66.6%	211	33.4%								
Trinity Hall	35.5	20.3%	34	20.4%	101	57.7%	96.5	57.8%	13	7.4%	14	8.4%	23.5	13.4%	19.5	11.7%	2	1.1%	3	1.8%	0	0.0%	175	51.2%	167	48.8%								
Wolfson College	11	25.6%	1	4.8%	21	48.8%	10	47.6%	2	4.7%	2	9.5%	7	16.3%	8	38.1%	2	4.7%	0	0.0%	0	0.0%	43	67.2%	21	32.8%								
<b>Totals</b>	<b>1,460</b>	<b>26.8%</b>	<b>879.5</b>	<b>18.4%</b>	<b>2,531</b>	<b>46.4%</b>	<b>2,668.5</b>	<b>55.8%</b>	<b>336</b>	<b>6.2%</b>	<b>397</b>	<b>8.3%</b>	<b>889.5</b>	<b>16.3%</b>	<b>694</b>	<b>14.5%</b>	<b>177.5</b>	<b>3.3%</b>	<b>106</b>	<b>2.2%</b>	<b>55</b>	<b>1.0%</b>	<b>38</b>	<b>0.8%</b>	<b>5,449</b>	<b>53.3%</b>	<b>4,783</b>	<b>46.7%</b>						

This table excludes unclassified Preliminary Examinations in Classics, Education Studies, History, Linguistics, and the First Examination in Theology for Ministry (see Table 9a).



## Unclassified Preliminary and Other Examinations 2008

Key: A = Classified  
 B = Insufficient Papers to be Classified  
 C = Not Classified

	Classics 1A			Classics 2			Education 1			Education Studies 2			History 1			Linguistics 1			Theology for Ministry 1		
	A	B	C	A	B	C	A	B	C	A	B	C	A	B	C	A	B	C	A	B	C
Christ's College	0	0	0	0	0	0	2	0	0	0	0	0	0	0	0	0	0	0	0	0	0
Churchill College	0	0	0	0	0	0	0	0	0	0	0	0	0	0	4	0	0	0	0	0	0
Clare College	1	0	0	1	0	0	1	0	0	0	0	0	0	0	9	0	1	0	0	0	0
Corpus Christi College	0	0	0	0	0	0	0	0	0	0	0	0	0	0	0	0	0	0	0	0	0
Downing College	1	0	0	0	0	0	0	0	0	0	0	0	0	0	6	0	0	0	0	0	0
Emmanuel College	1	0	0	0	0	0	1	0	0	0	0	0	0	0	9	1	0	0	0	0	0
Fitzwilliam College	0	0	0	0	0	0	0	0	0	0	0	0	0	0	8	0	1	0	0	0	0
Girton College	0	0	0	0	0	0	0	0	0	0	0	0	0	0	9	0	0	0	0	0	0
Gonville and Caius College	0	0	0	0	0	0	0	0	0	0	0	0	0	0	0	0	0	0	0	0	0
Homerton College	0	0	0	0	0	0	55	0	1	0	0	0	0	0	8	0	0	0	0	0	0
Hughes Hall	0	0	0	0	0	0	0	0	0	1	0	0	0	0	3	0	0	0	0	0	0
Jesus College	0	0	0	0	0	0	0	0	0	0	0	0	0	0	9	0	0	0	0	0	0
King's College	0	0	0	1	0	0	0	0	0	0	0	0	0	0	9	0	0	0	0	0	0
Lucy Cavendish College	0	0	0	0	0	0	0	0	0	0	0	0	0	0	0	0	0	0	0	0	0
Magdalene College	0	0	0	0	0	0	0	0	0	0	0	0	0	0	7	0	0	1	0	0	0
New Hall	0	0	0	0	0	0	0	0	0	0	0	0	0	0	11	0	0	1	0	0	0
Newnham College	0	0	0	0	0	0	0	0	0	0	0	0	0	0	11	0	0	0	0	0	0
Pembroke College	0	0	0	0	0	0	0	0	0	0	0	0	0	0	10	0	0	0	0	0	0
Peterhouse	0	0	0	0	0	0	0	0	0	0	0	0	0	0	8	0	1	0	0	0	0
Queens' College	0	0	0	0	0	0	1	0	0	0	0	0	0	0	8	0	0	0	0	0	0
Robinson College	0	0	0	0	0	0	0	0	0	0	0	0	0	0	6	1	0	0	0	0	0
Selwyn College	1	0	0	0	0	0	1	0	0	0	0	0	0	0	5	2	0	0	0	0	0
Sidney Sussex College	0	0	0	0	0	0	0	0	0	0	0	0	0	0	11	0	0	0	0	0	0
St Catharine's College	0	0	0	1	0	0	0	0	0	0	0	0	0	0	6	0	0	0	0	0	0
St Edmund's College	0	0	0	1	0	0	0	0	0	0	0	0	0	0	1	0	0	0	0	0	0
St John's College	0	0	0	0	0	0	0	0	0	0	0	0	0	0	8	0	0	0	0	0	0
Trinity College	0	0	0	0	0	0	0	0	0	0	0	0	0	0	8	0	0	0	0	0	0
Trinity Hall	0	0	0	0	0	0	0	0	0	0	0	0	0	0	6	0	0	0	0	0	0
Wolfson College	2	0	0	0	0	0	0	0	0	0	0	0	0	1	1	0	0	0	0	0	0
<b>Totals</b>	<b>6</b>	<b>0</b>	<b>0</b>	<b>4</b>	<b>0</b>	<b>0</b>	<b>61</b>	<b>0</b>	<b>1</b>	<b>1</b>	<b>0</b>	<b>0</b>	<b>181</b>	<b>12</b>	<b>3</b>	<b>2</b>	<b>0</b>	<b>0</b>	<b>19</b>	<b>0</b>	<b>0</b>



**The Reprographics Centre**

Océ VarioPrint® 6150/2110 & CPS800  
Printing & Finishing Systems

Watkiss PowerSquare™ 200 Finishing System



**UNIVERSITY OF  
CAMBRIDGE**

The Old Schools  
01223 332231  
01223 332324

[reprographics.enquiries@admin.cam.ac.uk](mailto:reprographics.enquiries@admin.cam.ac.uk)